


George Samerjan

Object Number	2016.03.08	Image	
Title	Rome, The Eternal City		
Location	Broken		
Date			
Era	Post WW II	Provenance	
Medium	Watercolor	Biltmore Hotel, New York City, Grand Central Galleries, November 1957; The National Academy Galleries, New York City, 20th Annual Exhibition, Audubon Artists, February 1962	
Painting Size	20 X 22		
Frame Size			
Frame Type			
Materials			

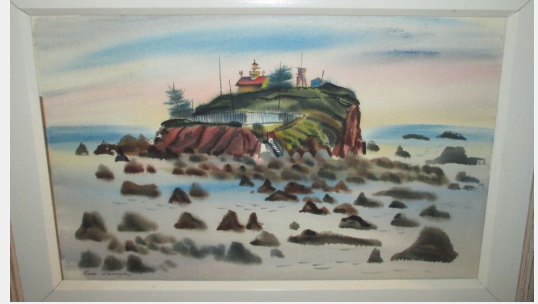
Artist Notes The golden light of the afternoon was a delicious experience to witness. To the right, is the monument to King Victor Emmanuel - a bone-white wedding cake in direct contrast to the exquisite classical Roman architecture surrounding it. The plaza, once host to cheering satraps was deserted except for the few sight-seeing nuns.

George Samerjan

Object Number 2016.05.14

Image

Title Crescent City Lighthouse



Location Rack 1A

Date

Era Post WW II

Provenance Art Directors Club Members Spring Exhibition 1949;
American Watercolor Society; The 29th Annual
California Watercolor Society Show

Medium Watercolor

Painting Size 21 1/2 X 13 1/2

Frame Size 29 1/2 X 21 1/2

Frame Type Light grey, wooden

Materials

Artist Notes From Hollywood, my home, I drove north on U.S. Highway 101, hugging the Pacific Ocean coastline of California with a station wagon loaded with painting materials for both watercolor and oil paintings. It was July, 1947. I was thirty-two years of age with a fine young family and a secure position as art director of the Los Angeles Times. The vacation trip, all alone, was a challenging experience, a test of my ability to create and be productive without distractions. A rich variety of subject matter - both seascape and landscape coupled with excellent weather kept me busy from early morning to sunset. "Crescent City Lighthouse, " was the last painting of the trip. It was the farthest north I reached. The tide is out and I'm sure that helped to make it a more interesting subject than had the lighthouse been surrounded with water. The protruding outcropping of rocks, with their variety of shapes help to establish planes of depth and act as visual stepping stones to the main "feature!" My wife June, made me promise to refrain from picking up hitch-hikers - which was a long standing habit of mine. When I was nine years old, Gary Cooper gave me a ride to the Hollywood YMCA in his 1924 Chrysler convertible. (Just ahead, Adolphe Menjou had stopped and picked up one of my friends in his Rolls Royce). I had a treasured black striped shirt, a holdover from my bachelor days which my wife absolutely refused to let me wear around the house. Somehow, it found its way into my suitcase and as I prepared to return home from Crescent City, realized that it was my only clean shirt. To economize, as well as to protect my property, I slept in the station wagon which, at this time, was stuffed tightly with oil paintings and watercolors. I arose early to get a good start for home. Tired and homesick, I headed down the barren highway and from out of nowhere, on the shoulder of the roadway, a youngish, tall, red-headed man frantically tried to stop me. Remembering my promise to my wife, I continued on! A few miles down the road, in the early morning light, I saw the unmistakable flashing lights of police cars and realized, as I approached, the cars barricaded the road. I obeyed their signal to stop - and was surrounded immediately by shotgun wielding police, sheriffs, etc. Of course, I was wearing my "prison-like" shirt. Rifles and shotguns at the ready, they checked out the car while I tried to explain that I was returning home from a painting trip. "Did you see anyone along the highway?" the sheriff asked. I described what I had seen, or was in the process of doing so, when almost in unison they said, "Thank god you didn't stop - he's an escaped convict from Ukiah State Prison for the criminally insane!" They waved me through the barricade, jumped into their vehicles and raced north up the highway.

George Samerjan

Object Number 2016.06.02

Image

Title Celestial Navigation



Location Rack 1B

Date 1969

Era Post WW II

Provenance National Academy of Design 144th Annual Exhibition
1969

Medium Watercolor

Painting Size 21 3/4 X 30

Frame Size 33 1/2 X 41 1/2

Frame Type Pink, metal

Materials #300 Arches

Artist Notes

George Samerjan

Object Number	2016.06.12	Image
Title	Mozart Teaching Beethoven	
Location	Rack 1B	
Date	1947	
Era	Post WW II	Provenance
Medium	Oil	
Painting Size	15 1/2 X 19 1/4	
Frame Size	20 1/2 X 24 1/2	
Frame Type	White, wooden	
Materials	On board	



Artist Notes

George Samerjan

Object Number	2016.06.15	Image
Title	Nude With Crescent Moon	
Location	Rack 1B	
Date		
Era	Post WW II	Provenance
Medium	Oil	
Painting Size	16 X 20	
Frame Size	21 1/2 X 25 3/4	
Frame Type	White, carved, wooden	
Materials		

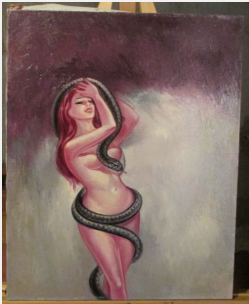


Artist Notes

George Samerjan

Object Number 2016.10.03 Image

Title Woman With Snake



Location Rack 1C

Date

Era Post WW II Provenance

Medium Oil

Painting Size 16 X 20

Frame Size Canvas on Stretcher

Frame Type

Materials

Artist Notes

George Samerjan

Object Number	2016.10.21	Image
Title	Backstage	
Location	Rack 1C	
Date	1952	
Era	Post WW II	Provenance
Medium	Oil	
Painting Size	16 X 12	
Frame Size	Canvas on Stretcher	
Frame Type		
Materials		



Artist Notes

George Samerjan

Object Number	2016.07.03	Image
Title	My Son, John	
Location	Rack 1D	
Date	1966	
Era	Post WW II	Provenance
Medium	Watercolor	
Painting Size	29 X 22 1/4	
Frame Size	39 1/3 X 31 1/2	
Frame Type	Dark brown, wooden	
Materials	#300 Arches	



Artist Notes Painted 12/26/66; Happy Birthday to John August 10, 1986 - with love from Dad

George Samerjan

Object Number 2016.08.20

Image

Title Mt. Whitney



Location Rack 1D

Date

Era Post WW II

Provenance Peter James Samerjan Studio, Hollywood, California, May - June 1947; Biltmore Hotel, Los Angeles, California, The Biltmore Gallery, 1947; Ferargil Galleries, New York City, January, 1950

Medium Watercolor

Painting Size 28 1/2 X 21

Frame Size 37 3/4 X 31 1/2

Frame Type White, wooden

Materials

Artist Notes Leaving Mojave on Route 14, a needle straight road that makes staying awake a problem, eventually I joined up with Route 395. Sailing past Owens Peak on my left, the Coso Junction followed by Haiwee, Olancho Peak, Cartago, Bartlett - Owens Lake on my right, anticipation was rapidly turning into anxiety! Turning west onto the access road to Mr. Whitney and her many camps and trails...now deserted, I truly felt alone and isolated. The sun now set, off the highway, the early evening darkness of winter my only companion. Coaxing the car to climb, climb ever higher, seeking a place to pull over and spend the night, the road suddenly narrowed and disappeared before my eyes. At first, I thought I was hallucinating due to the extreme altitude. In the darkness, I didn't see that the chain closing off the road to the Rangers' service vehicles and pack animals had been thrown aside! Driving up the west face of Mr. Whitney (unaware as I was at the time), the carburetor choking for air, the road or trail nowhere to be found, the car came to a sudden, lurching stop. The wind violently rocking the car, hungry, thirsty, dead tired and sleepy, I fell into a deep sleep! Awakened to the sound of roaring winds in the early light of morning, I saw nothing but open space - as though I were looking through an airplane window - landfall, points of reference completely absent. Slowly orienting myself, I realized that the car was resting on the edge of an enormous precipice. Had I stepped out of the car on the driver's side - too bad! After painting a few watercolors, I headed back down after a tortuous time turning the car around with but inches to spare. Now back to the "control post," where the chain had been left unsecured, Rangers now on duty, raised holy hell with me..."not my fault," I said, "I didn't see the chain in the dark of night." (1946)

George Samerjan

Object Number	2016.08.22	Image
Title	Early Morning - Cannes	
Location	Rack 1D	
Date		
Era	Post WW II	Provenance
Medium	Watercolor	
Painting Size	28 X 22	
Frame Size	38 1/4 X 32 1/4	
Frame Type	Brown, wooden	
Materials		



Artist Notes Whenever I looked on the French Riviera, I saw subjects bathed in sunlight and enveloped in rich, dazzling color. The view from my window, the semi-tropical palms, etc., reminded me of my childhood home, Southern California - the nude was sheer fantasy! However, I was on assignment for ESQUIRE Magazine. One of our feature models was - Miss France (photographed wearing American designed bathing suits). (1952)

George Samerjan

Object Number	2016.02.10	Image
Title	Pacific Ocean Northern Cave	
Location	Rack 2A	
Date		
Era	Post WW II	Provenance
Medium	Oil	
Painting Size	23 1/2 X 19 1/2	
Frame Size	31 3/4 X 27 3/4	
Frame Type	Light grey, wooden	
Materials		



Artist Notes

George Samerjan

Object Number	2016.02.12	Image
Title	Nativity	
Location	Rack 2A	
Date	1967	
Era	Post WW II	Provenance
Medium	Oil	Stanton Paper & Foil Co., NYC purchased one-time rights in 1969. They created a magnificent embossed foil, in exquisite detail, Christmas card produced in Europe.
Painting Size	31 1/4 X 21 1/4	
Frame Size	36 X 26	
Frame Type	Black and gold, wooden	
Materials		



Artist Notes

George Samerjan

Object Number 2016.02.13

Image

Title Moment in Pisa



Location Rack 2A

Date

Era Post WW II

Provenance The National Academy Galleries, New York City, 17th Annual Exhibition, Audubon Artists, April 1959; Samerjan One-man Show, Somerstown Galleries, Somers, NY October 20-November 17, 1985

Medium Oil

Painting Size 29 1/2 X 22

Frame Size 40 1/4 X 30 1/4

Frame Type Gold, metal, thin

Materials

Artist Notes To the left, in the painting, is the Baptistry. Children were playing - adding animation to the scene. The famous leaning tower - with vibrations suggested, became an unwitting background for the following tableau:...June and I were relaxing across the street at a sidewalk cafe when an attractive young lady arrived at the bus stop. A few moments later, a man arrives exclaiming platitudes of praise - extolling her bounteous charms and physical attributes...sensuous, verbalized foreplay as he briskly walked by. The subject of the public "recitative" remained unmoved!

George Samerjan

Object Number 2016.02.14

Image

Title Three Bouquets



Location Rack 2A

Date

Era Post WW II

Provenance Exhibited in 1950

Medium Oil

Painting Size 33 1/2 X 25 1/2

Frame Size 43 X 34

Frame Type Dark grey, wooden

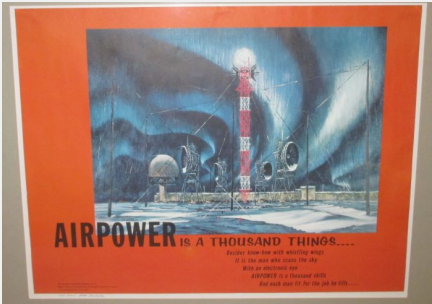
Materials

Artist Notes

George Samerjan

Object Number 2016.03.01 Image

Title Dew Line Outpost



Location Rack 2B

Date 1956

Era Post WW II Provenance

Medium Poster

Painting Size 29 X 22

Frame Size 37 X 31

Frame Type Silver, metal, thin

Materials

Artist Notes USAF Official Artist; 58th Weather Reconnaissance Squadron, 7th Weather Group (mats) non-stop 16 hour flight to the north pole (I sat over the nose-wheel)

George Samerjan

Object Number 2016.03.04

Image

Title View Of Toledo



Location Rack 2B

Date

Era Post WW II

Provenance Katonah Gallery, Katonah, New York Seventh Annual Outdoor Art Exhibition, 1962; Somerstown Galleries, Somers, New York, Samerjan One-man Show, October 20 - November 17, 1985; Courtyard Gallery, Katonah, New York, Samerjan Group Show, 1986

Medium Watercolor

Painting Size 29 1/2 X 21 1/4

Frame Size 36 1/4 X 27 3/4

Frame Type Brown, wooden

Materials

Artist Notes Arriving in Toledo, Spain, I was impatient to find the very spot from which El Greco stood to paint his great masterpiece - or at least, where he made his sketches. June and I drove out of the village a short distance and after climbing around the terrain for a while, I'm confident we found the spot. The goats have chewed up the flora if not absolutely destroyed everything that was growing during the days of El Greco. If the river flowed fresh and clear in his day, it is now a flowing stream of mud. The sensation of sharing a subject - right on the very spot, however modest my contribution, is mighty thrilling. (1952)

George Samerjan

Object Number 2016.03.07

Image

Title Rome - The Forum



Location Rack 2B

Date

Era Post WW II

Provenance

The Biltmore Hotel, New York City, the Grand Central Galleries, 1957; The National Academy Galleries, New York City, The Audubon Artists 31st Annual Exhibition January 18-February 4, 1973; Somerstown Galleries, Somers, New York, George Samerjan One-man Show, October 20-November 17, 1985

Medium Watercolor

Painting Size 29 3/4 X 22 1/4

Frame Size 36 1/4 X 27 3/4

Frame Type Worn, wooden

Materials

Artist Notes June and I wandered casually, unattended, throughout the site. I thought that I heard - perhaps barely, the sounds and echoes of Romans long gone. The buzzing cacaphony of the multitudes with their comings and goings...a remarkable experience recalling in a way, "the glory that was!" Elegance and caring in every aspect of their workmanship left an indelible impression. (1956)

George Samerjan

Object Number 2016.03.13
Title Portage Glacier, Alaska

Image



Location Rack 2B

Date

Era Post WW II

Medium Watercolor

Painting Size 29 1/4 X 21 3/4

Frame Size 40 1/4 X 30 1/4


Frame Type Silver, metal, thin

Materials 300 lb. Arches watercolor

Provenance Katonah Gallery Outdoor Show, 1962, Katonah, NY;
Lever House, New York City, the Art Directors Club of
New York Members' Fine Arts Exhibition, 1965;
Somerstown Galleries, Somers New York, Samerjan
One-man Show, October 20-November 17, 1985

Artist Notes Greenish, turquoise in color, the huge slabs of ice were startling to see. Standing alone in the Arctic in the path of an enormous source of energy, unfamiliar sounds, grinding, snapping, singing movement of a mountainous glacier resounded up from the frozen ground and resonated throughout my entire body! (1956)

George Samerjan

Object Number	2016.03.16	Image
Title	Broadway Show	
Location	Rack 2B	
Date	1949	
Era	Post WW II	
Medium	Oil	
Painting Size	19 3/4 X 16	
Frame Size	27 X 23	
Frame Type	Brown, wooden	
Materials		Provenance

Artist Notes

George Samerjan

Object Number	2016.01.09	Image
Title	Rocks And Sea	
Location	Rack 2C	
Date		
Era	Post WW II	Provenance
Medium	Oil	
Painting Size	17 1/2 X 13 1/2	
Frame Size	24 X 20	
Frame Type	Grey, wooden	
Materials		



Artist Notes

George Samerjan

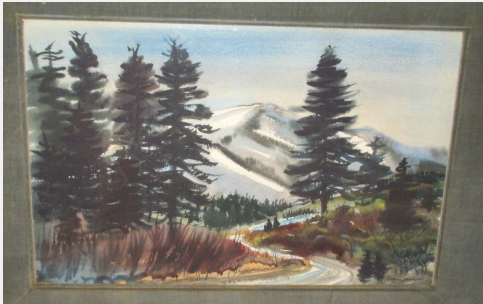
Object Number	2016.04.01	Image
Title	Coastline	
Location	Rack 2C	
Date		
Era	Post WW II	Provenance
Medium	Oil	
Painting Size	24 X 20	
Frame Size	31 3/4 X 28	
Frame Type	Green, wooden	
Materials		



Artist Notes

George Samerjan

Object Number	2016.04.04	Image
Title	Unknown (Pine and Mountain Landscape)	
Location	Rack 2C	
Date		
Era	Post WW II	Provenance
Medium	Watercolor	
Painting Size	21 1/4 X 13 1/2	
Frame Size	28 X 20 1/2	
Frame Type	Green, fabric, wooden	
Materials		



Artist Notes

George Samerjan

Object Number 2016.04.06

Image

Title High Sierra - Above Yosemite



Location Rack 2C

Date

Era Post WW II

Provenance Los Angeles Art Association, Los Angeles, California, 1945; Biltmore Hotel, Los Angeles, California, The Biltmore Art Gallery, April, 1947; Oris Art Insitute, Alumni Association Annual Invitational Exhibition, June 2-14, 1946; Ferargil Gallery, New York City, 1950; Associated American Artists Galleries, New York City, April 1947; Somerstown Galleries, Somers, New York, Samerjan One-Man Show, October, 20-November 17, 1985; The Biltmore Hotel, Grand Central Galleries, New York City, November 1957

Medium Watercolor

Painting Size 21 X 14 1/4

Frame Size 30 1/2 X 24 1/2

Frame Type Brown, wooden

Materials

Artist Notes Sixteen years of summer vacations were spent here with my family - when I was a boy. A deep lasting love of nature comes from my father. In our family, the word "Yosemite" was referred to in terms of enduring reverence. The quiet dignity of this magnificent place fired my imagination. Some, only see trees, sky, whatever - fragments of the whole. Gratefully, I felt the presence of everything Godly.

George Samerjan

Object Number 2016.09.01
Title Lake Tahoe

Image



Location Rack 2D

Date

Era Post WW II

Provenance

Medium Watercolor

Painting Size 30 1/2 X 22 1/2

Frame Size Matted

Frame Type

Materials

Artist Notes

George Samerjan

Object Number 2016.09.02 Image

Title Vase With Flowers



Location Rack 2D

Date

Era Post WW II Provenance

Medium Watercolor

Painting Size 15 X 18 1/2

Frame Size Matted

Frame Type

Materials

Artist Notes

George Samerjan

Object Number 2016.09.02
Title Colorful Nude

Image



Location Rack 2D

Date

Era Post WW II

Provenance

Medium Watercolor

Painting Size 15 X 11

Frame Size Matted

Frame Type

Materials

Artist Notes

George Samerjan

Object Number	2016.09.03	Image
Title	Sky and Heavens	
Location	Rack 2D	
Date		
Era	Post WW II	Provenance
Medium	Watercolor	
Painting Size	15 X 22	
Frame Size	Matted	
Frame Type		
Materials		



Artist Notes

George Samerjan

Object Number 2016.09.04

Image

Title The Shore



Location Rack 2D

Date

Era Post WW II

Provenance The Ferargil Galleries, New York City, 1950

Medium Watercolor

Painting Size 30 1/2 X 22 1/2

Frame Size Matted

Frame Type

Materials

Artist Notes I grew up in Hollywood, California, which was a twenty mile drive to the Pacific shore. In my youth, the beaches were uncrowded and swimming was an exhilarating experience. For children growing up during the "Great Depression," family outings with their glorious picnics were truly adventuresome and unforgettable. The Santa Monica Beach was a family favorite. The undulating, sensuous tide, rushing up the sandy beach was always a source of pleasure - physical as well as visual.

George Samerjan

Object Number 2016.09.05 Image

Title Field Flowers



Location Rack 2D

Date

Era Post WW II Provenance

Medium Watercolor

Painting Size 30 X 22

Frame Size Matted

Frame Type

Materials

Artist Notes

George Samerjan

Object Number 2016.09.05 Image

Title Fishermen



Location Rack 2D

Date

Era Post WW II

Provenance

Medium Watercolor

Painting Size 30 X 22

Frame Size Matted

Frame Type

Materials

Artist Notes

George Samerjan

Object Number2016.09.05

TitleAbstract Wilderness

Image



LocationRack 2D

Date

EraPost WW II

Provenance

MediumWatercolor

Painting Size23 1/2 X 18

Frame SizeMatted

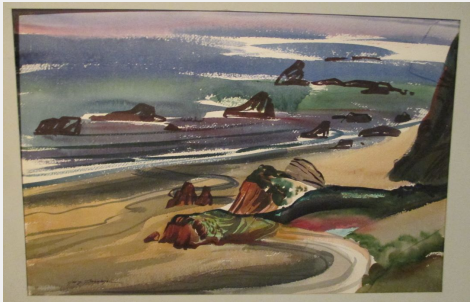
Frame Type

Materials

Artist Notes

George Samerjan

Object Number	2016.09.07	Image
Title	Pacific Coast	
Location	Rack 2D	
Date		
Era	Post WW II	Provenance
Medium	Watercolor	
Painting Size	22 1/2 X 16	
Frame Size	Matted	
Frame Type		
Materials		



Artist Notes

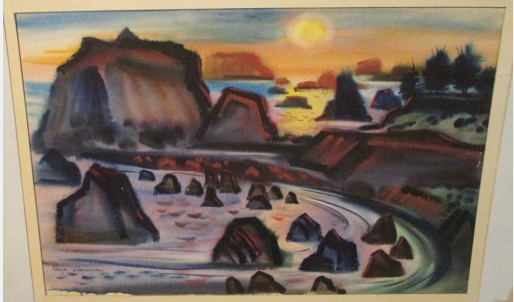
George Samerjan

Object Number	2016.09.07	Image
Title	California Mission	
Location	Rack 2D	
Date		
Era	Post WW II	Provenance
Medium	Watercolor	
Painting Size	22 1/2 X 16	
Frame Size	Matted	
Frame Type		
Materials		



Artist Notes

George Samerjan

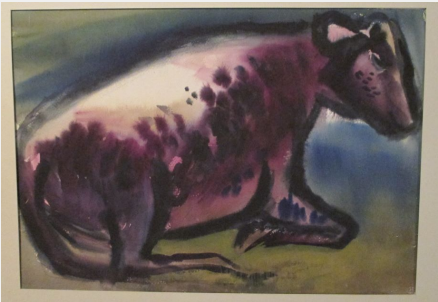
Object Number	2016.09.07	Image
Title	Oregon Coastline	
Location	Rack 2D	
Date		
Era	Post WW II	
Medium	Watercolor	
Painting Size	23 X 15	
Frame Size	Matted	
Frame Type		
Materials		

Artist Notes

George Samerjan

Object Number 2016.09.09
Title Purple Cow

Image



Location Rack 2D

Date

Era Post WW II

Provenance

Medium Watercolor

Painting Size 15 X 20

Frame Size Matted

Frame Type

Materials

Artist Notes

George Samerjan

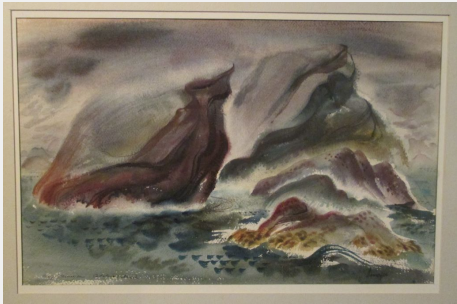
Object Number	2016.09.11	Image
Title	Chinese Lio Statue	
Location	Rack 2D	
Date		
Era	Post WW II	Provenance
Medium	Watercolor	
Painting Size	23 X 17	
Frame Size	Matted	
Frame Type		
Materials		



Artist Notes

George Samerjan

Object Number	2016.09.11	Image
Title	Pacific Ocean	
Location	Rack 2D	
Date		
Era	Post WW II	Provenance
Medium	Watercolor	
Painting Size	22 X 15	
Frame Size	Matted	
Frame Type		
Materials		



Artist Notes

George Samerjan

Object Number	2016.09.11	Image
Title	Mountain Bend	
Location	Rack 2D	
Date		
Era	Post WW II	Provenance
Medium	Watercolor	
Painting Size	22 X 15	
Frame Size	Matted	
Frame Type		
Materials		



Artist Notes

George Samerjan

Object Number 2016.08.15
Title The Betrayal

Image



Location Wall

Date

Era Post WW II

Provenance The Architectural League, New York City, The Art Directors Club of New York Fine Arts Exhibition, December 1950 - prize award

Medium Oil

Painting Size 44 X 36

Frame Size 56 X 47

Frame Type Dark grey, wooden

Materials

Artist Notes We were living in New Rochelle, New York at the time I painted this painting...our very first home. My "studio" was the entire downstairs - the basement! In retrospect, it was a very happy and rewarding period of my life. My young children could and did scamper downstairs at will to see their father painting, sculpting, casing, etc. They grew up with a sensitive appreciation of the energy and commitment required of an artist. My son George, only four years of age at the time I was working on this painting, took one fast look at the figures on the right and without breaking stride - looking for his favorite toy, said "idiots!" I did not add another stroke - his comment was riveting.

George Samerjan

Object Number 2016.11.14

Image

Title French Bread



Location Upstairs

Date 1952

Era Post WW II

Provenance Associated American Artists Galleries, New York City,
George Samerjan One-man Show, February 16 -
March 7, 1953

Medium Watercolor

Painting Size

Frame Size

Frame Type White, wooden

Materials

Artist Notes Although our outfit in World War II stopped over in Paris, we were going to set up our General Hospoital in Chartres - opportunities to paint were limited to pocket-size watercolor pads. Great good fortune took me back to Paris, on assignment in 1952. Headed for the Riviera, I arose early in the morning to absorb the color and spirit of this magnificent City. Walking the broad boulevard, a most fashionably attired lady crossed the broad boulevard carrying a large loaf of unwrapped French bread. The two traffic Gendarmes watched admiringly. (1952)