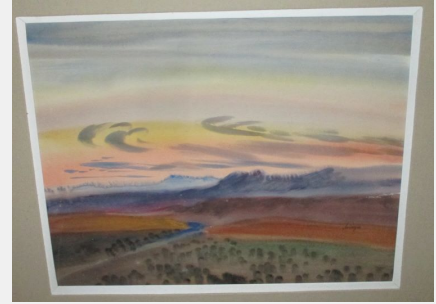


George Samerjan

Object Number 2016.04.07

Image

Title North Of Mojave Desert



Location Broken

Date

Era Depression Era Landscape

Provenance Peter James Samerjan Studio, Hollywood, California, May-June, 1947; Architectural League: New York City, The Art Directors Club of New York Members' Fine Arts Exhibition, 1951; Somerstown Galleries: Somers, New York, Samerjan One-man Show, October 20-November 17, 1985

Medium Watercolor

Painting Size

Frame Size

Frame Type

Materials

Artist Notes Tired, after days of painting in the desert, I headed home to Hollywood at sundown. Racing south on a lonely uninhabited desert highway - Route 395, below Lone Pine, Owens Lake to the east...just south of Cartage - a bang sounding much like a gun shot, struck underneath the hood of the car bringing it to a dead stop! Raising the hood of the car, I discovered that the cap on the vacuum tank had blown away. Grabbing my flashlight, I started walking up the road in the dark of night hoping that with luck, I might find the cap, although dime-sized. Sweeping the flashlight back and forth across the road, I quickly attracted the attention of the ever alert coyotes who were joined by other assorted creatures. The drop in temperature comes quickly after the sun sets and having left the warm car hastily, I realized that I needed additional clothing to keep from freezing. Looking back, I realized that I had wandered a considerable distance from my disabled car. Then, through the crystal clear desert night, I saw what appeared to be a roundish, orange-colored light dancing a few feet above the surface of the road - but it was a long, long way off. Eventually, the quivering light came closer and closer. Suddenly, a car materialized out of the blackness! The ancient Ford coupe, a 30 's model was listing 45 degrees. A voice called out, "Get in the car before you lose your life!" As the car pulled closer, a man gargantuan in size, once again demanded I lose no time getting into their car. I saw no possible way to squeeze into the car - stepping on the running board, I saw a very thin man behind the steering wheel. "Get in, quick man - we leave no one on the floor of the desert at night!" Driving me to my car, it was agreed they would push my car to the nearest station...only I didn't know it was twenty-five miles away. What a glorious sight in the middle of the night - a gas station operated by a family. Without the gasoline pump, the facility could have been used as a setting for a western movie. While I treated the men to "iced beer," the only gratuity they would accept, the father of two sweet teenaged girls and I went out to the back of the building. There in the dim desert light were acres of wrecks - cars, trucks, wagons, a welcome graveyard of possibilities. In seconds, he lifted the hood of a car and retrieved the very cap required! (My mother-in-law, Grandma Alma, had among her keepsakes, a postcard of this very gas station-garage-pit stop, etc. When I first saw the postcard, I couldn't believe my eyes. When questioned about the postcard - the story becomes more intriguing. Grandma's friend traveled the west making pen and ink sketches that he converted into postcards for advertising purposes - and had discovered the station years before!)

George Samerjan

Object Number 2016.08.01

Image

Title Wreckage



Location Broken

Date

Era Depression Era

Provenance

Medium Watercolor

Painting Size


Frame Size

Frame Type

Materials

Artist Notes

George Samerjan

Object Number	2016.05.15	Image
Title	California Farm	
Location	Rack 1A	
Date		
Era	Depression Era	
Medium	Watercolor	
Painting Size	19 X 12 1/4	
Frame Size	31 3/4 X 23 1/2	
Frame Type	Brown, wooden	
Materials	On ray paper	Provenance
Artist Notes	Southern California	

George Samerjan

Object Number 2016.05.17

Image

Title Mums



Location Rack 1A

Date Depression Era

Era Depression Era

Medium Watercolor

Painting Size 17 X 21

Frame Size 31 1/2 X 36 1/2

Frame Type Silver, wooden, carved

Materials

Provenance Friends of American Art - First Annual Exhibition, Grand Rapids, MI 3/40; The San Diego Museum of Fine Arts, CA, Invitational 4/5/1938; The Whitney Museum of American Art, NYC Exhibition of 200 watercolors, Sponsored by the Section of Fine Arts, Washington, DC 9/16-30/1941; 20th Annual Exhibition California Watercolor Society In cooperation with the Los Angeles County Museum, 1940

Artist Notes

George Samerjan

Object Number	2016.05.01	Image
Title	June Lake, High Sierra	
Location	Rack 1B	
Date		
Era	Depression Era landscape	Provenance
Medium	Watercolor	
Painting Size	20 1/2 X 13 1/2	
Frame Size	28 1/4 X 22 1/4	
Frame Type	Brown, wooden	
Materials		



Artist Notes

George Samerjan

Object Number 2016.05.03

Image

Title Bianchi Ranch



Location Rack 1B

Date

Era Depression Era

Provenance

George Samerjan Studio, 9047 Sunset Boulevard, Hollywood, California, 1939; The Laguna Beach Art Association: Member's Exhibition, April-May 1942, Awarded Honorable Mention; Santa Paula Chamber of Commerce: Santa Paula, California, Sixth Annual Art Exhibition, August 28 - September 1942; Biltmore Salon: Biltmore Hotel, Los Angeles, California, March 1943; The Los Angeles County Museum of Art: Los Angeles, California, 22nd Annual Exhibition, The California Watercolor Society, December 1943, Prize Award

Medium Watercolor

Painting Size 27 1/2 X 21

Frame Size 33 1/4 X 27 1/2

Frame Type Light brown, wooden

Materials

Artist Notes Courting a beautiful young lady took me north on Highway 101, through magnificent rolling hills, mission country, where I painted Mission Santa Ynez, through Atascadero and finally to Paso Robles. While she, June Lunde, was dutifully at work during the day whenever I drove up to visit, my painting paraphernalia always in tow; I found the landscape a watercolor painters dream. Most often when I'm in the field painting, acts of kindness by total strangers is inevitable and indeed appreciated. Here I was, set up on the "shoulder" of a rural road with not a single soul in sight, working rapidly as one must with watercolor...then suddenly I heard an angry voice scream out, "Sic him!" From out of nowhere, several huge dogs came rushing down the hill at full bark. Speaking softly to the dogs, they came to a sudden stop, turned and went back up the hill. (1939)

George Samerjan

Object Number	2016.05.04	Image
Title	Stream - Yosemite	
Location	Rack 1B	
Date	Depression Era landscape	
Era	Depression Era	Provenance
Medium	Watercolor	
Painting Size	25 1/4 X 20	
Frame Size	35 X 30	
Frame Type	Light grey, wooden	
Materials		



Artist Notes

George Samerjan

Object Number 2016.05.05

Image

Title Jenny Lind, Where She Sang,
Piper's Opera House



Location Rack 1B

Date

Era Depression Era

Provenance First Invitational Purchase Prize Exhibition Chaffey,
Free Public Library, Ontario, California, Chaffey
Community Art Association, October 24-November 2,
1941; Somertown Galleries, Somers, New York,
George Samerjan One-Man Show, October 20-
November 17, 1985

Medium Watercolor

Painting Size 27 X 20 3/4

Frame Size 37 1/2 X 31 3/4

Frame Type Light brown, wooden

Materials

Artist Notes At the time, a Southern Californian unfamiliar with snow and freezing weather, I relished the stimulation of painting outdoors in freezing weather. Virginia City, once with a population of 40,000 had dropped down to 400 when I arrived. Although not a State at the time, President Lincoln called on her to supply the silver that financed the Civil War. The painting was executed outdoors during a gentle snow fall. Once accepted by the residents, I was invited to enter an unlocked haberdashery store - alone! Situated nearby Piper's Opera House, I walked into the vacated store finding it left by its owners years before - all items still in place - untouched! The experience truly turned back the clock to another era. Years later, I read that Arshile Gorky and Noguchi visited Virginia City in 1941, as well.

George Samerjan

Object Number	2016.06.10	Image
Title	Unknown (Mountainouse Landscape)	
Location	Rack 1B	
Date		
Era	Depression Era landscape	Provenance
Medium	Watercolor	
Painting Size	21 3/4 X 14 1/4	
Frame Size	29 X 21 1/2	
Frame Type	Light grey, wooden, shadow	
Materials		



Artist Notes

George Samerjan

Object Number 2016.05.07 Image

Title Model "T" Ford/Merry Go Round - School Playground

Location Rack 1C

Date

Era Depression Era

Provenance

Medium Watercolor

Painting Size 20 1/2 X 13 1/4

Frame Size 28 1/2 X 22 3/4

Frame Type Silver, wooden

Materials



Artist Notes Additional watercolor on back (signed) "Merry Go Round - School Playground"

George Samerjan

Object Number	2016.08.03	Image
Title	Unknown (Girl With Bear)	
Location	Rack 1C	
Date		
Era	Depression Era	Provenance
Medium	Watercolor	
Painting Size	5 X 7	
Frame Size	12 X 15	
Frame Type	Tan/Black, wooden	
Materials		



Artist Notes

George Samerjan

Object Number	2016.08.05	Image
Title	Karen (Child)	
Location	Rack 1C	
Date		
Era	Depression Era	Provenance
Medium	Watercolor	
Painting Size	6 X 9	
Frame Size	12 X 15	
Frame Type	Black, wooden	
Materials		



Artist Notes

George Samerjan

Object Number	2016.08.11	Image
Title	Model Resting	
Location	Rack 1C	
Date		
Era	Depression Era	Provenance
Medium	Watercolor	
Painting Size	11 1/2 X 15 1/4	
Frame Size	18 3/4 X 23	
Frame Type	White, wooden	
Materials		



Artist Notes

George Samerjan

Object Number 2016.08.12

Image

Title Apollo's Attendants



Location Rack 1C

Date

Era Depression Era

Provenance Samerjan Studio, 9047 Sunset Boulevard, Hollywood, California, 1941

Medium Oil

Painting Size 24 X 20

Frame Size 25 1/4 X 21 1/2

Frame Type Brown, wooden

Materials

Artist Notes The Samerjan studio-gallery on the Sunset Strip was a means to an end! Having received my third mural commission from the Section of Fines, Department of the Treasury, Washington, D.C., I needed large space. What had been a gallery-workshop for a leading silversmith turned out to be an ideal solution as well as location, although at the time, that was not a pressing problem. Next door was the famous Tone Price Book Store - a meeting place for notables of the motion picture colony. Across the street was the Bing Crosby building. Near the bookstore, a luncheonette was my source for refreshment as well as change to make phone calls. In truth, I always looked forward to an opportunity to take a "break." The interludes were not only enjoyable but oftentimes turned out to be exciting experiences - considering my strict, disciplined working regimen. High adventure best describes the delight and pleasure I experienced one morning when I saw seated at the counter, Dorothy Lamour, Bob Hope and Jerry Colonna - engaged in animated conversation! A block west across Sunset Boulevard, at the beginning of the bridge path (a median divider planted with a border of hedges that marked the beginning or boundary between Hollywood and Beverly Hills) was the Cock & Bull. One just couldn't help watching when a shining-bright maroon-colored Rolls Royce slowed down in front of the entrance and before coming to a stop, the doorman bounced out and with a flourish opened the limousine door. The unmistakable Franklyn Pangborn alighted. Slowly, but with grace, elegance and the broad mannerisms identified with his film roles, he guided a beautifully groomed lady, Edna Mae Oliver to the entrance. Celebrities loved to stroll this area of chic shops and boutiques - especially at night. Working late, the gallery door always open, I don't recall ever having a concern for security. Celebrities dropped in and a quick glance at the guest-register was all the prompting I needed. Rosalind Russell's father-in-law, a handsome gentleman, showed a sincere interest in my work and visited and chatted with me while I worked on the full scale cartoons for the murals. In his youth, he modelled for life classes - that "confession" gave me reassurance. His compliments were based on experience and knowledge. Carl Brisson, exuberant, gracious, and sympathetic enriched my life experiences. One balmy, quiet evening, a lone man entered the gallery and signed the guest book. Seeing his signature, I was overjoyed. He was genuinely pleased if not surprised that I knew of him and his work. We both began talking at the same time. Art Center School - now Art Center College in Pasadena, California had acquainted us with his animated films - which were innovative and utilized graphic symbolism with great imagination! He did not need to explain that Walt Disney had brought him to America to help launch the first full feature animated film - Fantasia. As he relaxed in the gallery, conversation flowered and I sensed that he was

George Samerjan

Object Number 2016.08.24

Image

Title Figure Resting



Location Rack 1C

Date

Era Depression Era

Provenance

Medium Oil

Painting Size 24 3/4 X 29 1/2

Frame Size 29 X 34

Frame Type Brown, wooden

Materials

Artist Notes

George Samerjan

Object Number 2016.08.25

Image

Title Six Horses An Impression

Location Rack 1C

Date

Era Depression Era

Provenance Honorable Mention California Watercolor Society, 1938

Medium Watercolor

Painting Size 21 X 13 3/4

Frame Size 31 1/4 X 25

Frame Type Grey, wooden

Materials

Artist Notes Opening Day - Santa Anita

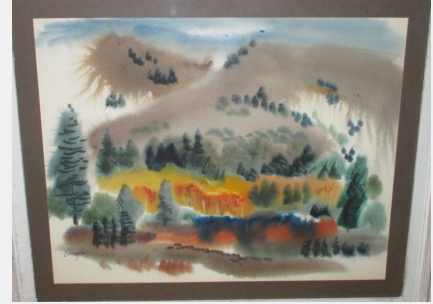


George Samerjan

Object Number 2016.08.27

Image

Title Autumn - High Sierra



Location Rack 1C

Date

Era Depression Era landscape

Provenance Birmingham Public Library Gallery, Birmingham, Alabama, Watercolor Society of Alabama, 10th Annual Jury Exhibition, February 1-28, 1950; Somerstown Galleries, Somers, New York, Samerjan One-man Show, October 20 - November 17, 1985

Medium Watercolor

Painting Size 17 1/2 X 13 1/2

Frame Size 25 1/2 X 22

Frame Type White/brown, wooden

Materials

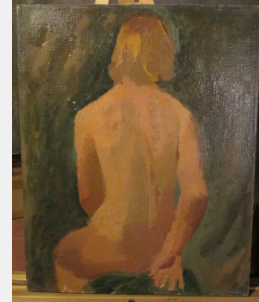
Artist Notes Arriving late at night, having driven up from Los Angeles through the eastward passage, Dad and I spotted a small clearing ideal for setting up camp. Exhausted by the long drive, we were soon fast asleep on our cots. The "roar" of sierra winds racing through and above the timber line was an unforgettable lullaby! Dad, an early riser, prepared a sumptuous breakfast on his treasured Coleman stove. In the meantime, I started the painting exposed to the frigid air - but assured of a delicious breakfast as the aroma of crisply prepared bacon wafted through the chill air. My father spent the time while I was painting by trout fishing in the adjacent streams. The closing days of October, while bringing luscious color to the landscape, also meant the end of the fishing season. The high altitude combined with sharp, penetrating wind, discouraged lengthy exposure to the weather. One needed to paint quickly - feet freezing and hands burning from the cold. It was a marvelous challenge to try to preserve the instant image in a fresh and lasting resolve. Returning finally, to our campsite, I found a sad and dejected Dad. "You see, son, this gorgeous, strong rainbow trout danced frantically over the ice-cold water - bit the gut leader off the hook...and disappeared!"

George Samerjan

Object Number 2016.10.01

Image

Title Blonde Beauty



Location Rack 1C

Date

Era Depression Era

Provenance George Samerjan Studio, Hollywood, California, 1941

Medium Oil

Painting Size 16 X 20

Frame Size Canvas on Stretcher

Frame Type

Materials

Artist Notes The model's throne stood in the center of the painting studio. Easels circled the throne and anticipating the most interesting spot prior to the appearance of the model was a gamble. The raised platform was adequate for either standing or reclining poses. One usually got set up and prepared one's palette when painting in oils before the model arrived and disrobed - naturally I'm talking about a life class. The instructor determined the pose often deferring to the suggestions of the model. However, most models had a sense of work level of the particular class and tried to accommodate - by slowly turning, twisting and seeking an "attitude" that would be both interesting and paintable. An important consideration or concession in the selection of a final pose was time - the ability of the model to hold or freeze a pose with- out moving for twenty minutes. One's view of the final pose, as mentioned previously was unpredictable. The pose now set, looking up I realized that the back of the model was to be my subject or "view." I was truly distressed! The model was a stunning blond the male students relished painting. Suddenly, standing alongside of me, was my professor, Willard Nash whom I admired as a fine artist. Years later, I came to realize that I had also been a confidant. He quietly verbalized the possibilities and helped me to plan an exploration of color, planes and subtle movement of light as it caressed her torso. However convincing his pep talk, he knew instinctively that I would have preferred spending the time allowed for the session studying possibilities that to me were more seductive. The painting incorporates the "tertiary" palette preached constantly by Willard Nash.

George Samerjan

Object Number 2016.10.02 Image

Title Friend - LA



Location Rack 1C

Date

Era Depression Era Provenance

Medium Oil

Painting Size 16 X 20

Frame Size Canvas on Stretcher

Frame Type

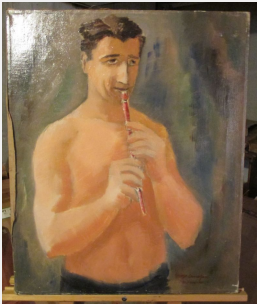
Materials

Artist Notes

George Samerjan

Object Number 2016.10.06 Image

Title Self Portrait



Location Rack 1C

Date

Era Depression Era Provenance

Medium Oil

Painting Size 20 X 24

Frame Size Canvas on Stretcher

Frame Type

Materials

Artist Notes

George Samerjan

Object Number 2016.10.07 Image

Title Fisherman



Location Rack 1C

Date 1936

Era Depression Era Provenance

Medium Oil

Painting Size 20 X 24

Frame Size Canvas on Stretcher

Frame Type

Materials

Artist Notes

George Samerjan

Object Number 2016.10.08 Image

Title Profile



Location Rack 1C

Date

Era Depression Era

Provenance

Medium Oil

Painting Size 20 X 26

Frame Size Canvas on Stretcher

Frame Type

Materials

Artist Notes

George Samerjan

Object Number	2016.10.09	Image
Title	Mandolin	
Location	Rack 1C	
Date		
Era	Depression Era	Provenance
Medium	Oil	
Painting Size	28 X 18	
Frame Size	Canvas on Stretcher	
Frame Type		
Materials		



Artist Notes

George Samerjan

Object Number 2016.10.11 Image

Title Woman In Red



Location Rack 1C

Date 1935

Era Depression Era Provenance

Medium Oil

Painting Size 25 X 30

Frame Size Canvas on Stretcher

Frame Type

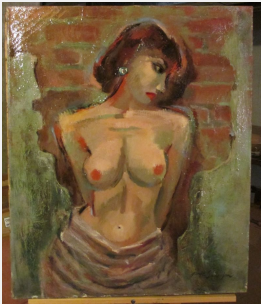
Materials

Artist Notes

George Samerjan

Object Number 2016.10.13 Image

Title Twilight Figure



Location Rack 1C

Date

Era Depression Era

Provenance

Medium Oil

Painting Size 25 X 30

Frame Size Canvas on Stretcher

Frame Type

Materials

Artist Notes

George Samerjan

Object Number	2016.10.14	Image
Title	Merced River, Yosemite	
Location	Rack 1C	
Date		
Era	Depression Era landscape	Provenance
Medium	Oil	
Painting Size	30 X 25	
Frame Size	Canvas on Stretcher	
Frame Type		
Materials		



Artist Notes

George Samerjan

Object Number 2016.10.17 Image

Title Girl Walking In A Starry Night



Location Rack 1C

Date

Era Depression Era Provenance

Medium Oil

Painting Size 34 X 26

Frame Size Canvas on Stretcher

Frame Type

Materials

Artist Notes

George Samerjan

Object Number 2016.10.20 Image

Title Yellow Flowers



Location Rack 1C

Date

Era Depression Era Provenance

Medium Oil

Painting Size 10 X 14

Frame Size Canvas on Stretcher

Frame Type

Materials

Artist Notes

George Samerjan

Object Number 2016.07.06 Image

Title Nude: One



Location Rack 1D

Date

Era Depression Era Provenance

Medium Watercolor

Painting Size 27 1/2 X 20 1/2

Frame Size 29 1/4 X 36 1/4

Frame Type Silver, metal, thin

Materials

Artist Notes

George Samerjan

Object Number	2016.02.01	Image
Title	Los Angeles Night	
Location	Rack 2A	
Date	1938/39	
Era	Depression Era	Provenance
Medium	Oil	
Painting Size	25 X 22	
Frame Size	32 X 29	
Frame Type	Multiple browns, wooden	
Materials	Painted entirely with a palette	



Artist Notes Painted in situ - using a flashlight as source of light

George Samerjan

Object Number	2016.02.02	Image
Title	San Pedro Harbor	
Location	Rack 2A	
Date		
Era	Depression Era	Provenance
Medium	Oil	
Painting Size	25 1/2 X 24 1/2	
Frame Size	36 1/4 X 30 1/4	
Frame Type	Green, wooden	
Materials		



Artist Notes

George Samerjan

Object Number	2016.02.03	Image
Title	Cannery Row - Monterey	
Location	Rack 2A	
Date		
Era	Depression Era	Provenance
Medium	Oil	
Painting Size	25 1/2 x 21 3/4	
Frame Size	34 1/2 X 30 1/2	
Frame Type	Light brown, carved, wooden	
Materials		



Artist Notes

George Samerjan

Object Number 2016.02.04

Image

Title Barbara



Location Rack 2A

Date 1940/41

Era Depression Era

Provenance George Samerjan Studio, Hyperion Avenue, Los Angeles CA; George Samerjan Studio, Sunset Boulevard, Hollywood, CA; George Samerjan Studio, 80 W. 4th Street, New York City

Medium Oil

Painting Size 27 1/4 X 29 1/2

Frame Size 36 1/2 X 32 1/2

Frame Type White, wooden

Materials

Artist Notes Gordon Newell the sculptor, moved from Los Angeles to Big Sur and I was fortunate to have been able to rent the studio he owned. I had received a commission to paint murals, three panels, for the Maywood, California Post Office – which of course provided the wherewithal. His property also included two other studio/apartments. One was rented to a classmate, James Hanson who had received a commission to create a sculpture of young Lincoln for the Justice Building in Los Angeles. The studio in the center of the property was occupied by a mother of two daughters. The older daughter was away a great deal of the time. Barbara, the younger of the two girls was very shy and quiet. The mother was deeply interested in anything creative or artistic and rarely missed an opening reception for local talent or people of wide acclaim. She was always willing to expand in depth and detail providing stimulating critiques of the receptions she attended the previous evening. Reflecting back nearly fifty years, I realize that she was a most unusual and extraordinary individual. Her enthusiasm for the work of artists doing exciting and interesting things also gave me moral support! Her descriptions of the Calder Show and George Gershwin exhibition, which were big hits in Hollywood at the time (1940-41), were masterpieces. My work schedule was proscribed by the Treasury Department Section of Fine Arts and making deadlines left little time for socializing. One morning, the mother while performing a chore, perhaps watering her garden, called to me and asked if I wouldn't like to see her daughter Barbara's lovely tan. Before I could answer, she called, "Barbara!" Responding promptly, Barbara came outside and her mother continued, "I told George you have a striking tan, why don't you go into his studio and show him. Perhaps he'd like to paint you!" From what I saw, she had a fine tan but in Southern California a tan in itself isn't that unique. Barbara stepped into my studio and without hesitation disrobed. Up until that moment, I had no idea nor hint of the good fortune awaiting me. Thomas Wolfe wrote about the Lundgren sisters..."lily white breasts and cherry tits..." Barbara's breasts were magnificently enshrined by a body saturated with a golden honey-colored tan. A tan that acted as a mat to spotlight and enhance the alabaster-like luminosity of her opalescent breasts! Within seconds I placed a canvas on my easel and as the painting progressed so did my expectations. Barbara was a quiet, introspective young lady and a superb model. The resulting painting is bright luminous and painted with my teacher Willard Nash's "tertiary color techniques" in mind. Throughout the sitting, Barbara remained stoic while I concentrated on the problems at hand. There was no conversation between the two of us and I was unable to read or to interpret the deadly silence nor understand her mother's motive in allowing me to immerse myself in a sexually arousing unforgettable encounter. Barbara was totally in control and I did not betray her mother's

George Samerjan

Object Number	2016.02.05	Image
Title	Ellena's Bouquet	
Location	Rack 2A	
Date		
Era	Depression Era	Provenance
Medium	Oil/Wax	
Painting Size	36 X 30	
Frame Size	42 3/4 X 37	
Frame Type	Reddish brown, wooden	
Materials	Oil/ wax emulsion on linen	



Artist Notes

George Samerjan

Object Number 2016.03.12

Image

Title Mediterranean View...



Location Rack 2B

Date

Era Depression Era

Provenance

The National Academy Galleries, New York The American Watercolor Society, 100th Annual Exhibition, April 6-23, 1967; Traveling Show: The American Watercolor Society Matted Traveling Show, 1967-68 (Laguna Beach, California; Southern Method University; Dallas, Texas; Hallmark Cards, Kansas City, Missouri; Centenary College Library, Shreveport, Louisiana ; Columbia Museum of Art, Columbia, South Carolina; Davenport Municipal Art Gallery, Davenport, Iowa; Grand Rapids Art Museum, Grand Rapids, Michigan; Castleton State College, Castleton, Vermont;

Medium Watercolor

Painting Size 30 X 22 1/4


Frame Size 37 3/4 X 31 1/2

Frame Type Light brown, wooden

Materials

Artist Notes This watercolor is the most "traveled" and exhibited of my paintings having been selected for the American Watercolor Society Traveling Show. The view is from my window overlooking the Mediterranean Ocean - at the Hotel Negresco, Nice. The figure I hasten to add is based on a drawing from one of the models in a figure painting class I once taught at Pratt Institute, Brooklyn, New York. (Other faculty members at the time: Franz Kline, Richard Lindner, George McNeil, Brooks, etc.) (1952)

George Samerjan

Object Number	2016.01.01	Image		
Title	Midnight Family			
Location	Rack 2C			
Date	1938			
Era	Depression Era	Provenance		
Medium	Oil	Exhibited Laguna Beach Art Association 1939; Virginia Myseym of Fine Arts 1940; Santa Cruz Art League 1941; California State Fair Sacramento 1941		
Painting Size	23 1/2 X 17 1/2			
Frame Size	30 1/2 X 24			
Frame Type	Light grey, wooden			
Materials				

Artist Notes

George Samerjan

Object Number	2016.01.02	Image
Title	Fourth Ward School House, Virginia City, Nevada	
Location	Rack 2C	
Date		
Era	Depression Era	Provenance
Medium	Watercolor	
Painting Size	23 1/2 X 18 3/4	
Frame Size	31 3/4 X 27 3/4	
Frame Type	Green, wooden	
Materials		



Artist Notes

George Samerjan

Object Number	2016.01.04	Image
Title	Sunday Afternoon- Migrant Workers' Children Playing	
Location	Rack 2C	
Date	1939	
Era	Depression Era	Provenance
Medium	Watercolor	
Painting Size	22 1/2 X 16	
Frame Size	34 1/4 X 25	
Frame Type	Red, wooden	
Materials		
Artist Notes	In situ	



George Samerjan

Object Number 2016.01.05 Image

Title Boy's Playing - Spinning A
Top

Location Rack 2C

Date 1935

Era Depression Era

Provenance

Medium Watercolor

Painting Size 20 1/2 X 13 1/2

Frame Size 32 1/2 X 24 1/2

Frame Type Silver, wooden

Materials



Artist Notes In situ. The "Great Depression" was in full swing. Each day revealed new and different aspects of large numbers of people seeking work, food and shelter - America in the '30's had no "safety nets" providing for social welfare assistance, etc. People helped each other when possible and indeed to the very best of their ability. I was eighteen years of age, I believe, when I painted our neighborhood children playing - spinning tops. We were a neighborhood of families - if not the entire town of Hollywood, California where I grew up. Families seemed to survive. Hardly a family was without a "senior" member- a grandparent, aunts, uncles, etc. often living together. Perhaps it was this sense of unity that allowed children to be children...through those treacherous times. Drugs, muggings, etc. were virtually unknown where we lived. I witnessed many, many examples of compassion, caring and outright sharing of scarce commodities. Nothing was ever thrown away - "save it for someone less fortunate than we," mother would admonish.

George Samerjan

Object Number 2016.01.06

Image

Title Things Are Bad All Over



Location Rack 2C

Date 1934

Era Depression Era

Provenance Palos Verdes, California, Aquarelle Painters of California, August 27- September 29, 1939; George Samerjan Studio, 9047 Sunset Boulevard, Hollywood, California, 1939

Medium Watercolor

Painting Size 20 1/2 X 16

Frame Size 31 X 27 1/2

Frame Type Green, wooden

Materials

Artist Notes The road north from my Hollywood, California home to the San Fernando Valley, in my boyhood, was known as "Cahuenga Pass." Parallel to this winding, precipitous highway, was a dirt road it replaced. It was the "pass" used by Junipero Serra, conquistadores, Joaquin Murieta, and assorted explorers, desperadoes, land speculators and snake-oil con artists. Often, I thought of turning off the highway and "exploring" for myself - hopefully seeking fresh visual images and exhilarating experiences. The valley ahead was undeveloped. Residential lots were being sold for twenty dollars down. The real estate agents sat at card tables and at night their Mazda lamps strung out like "luminarios" reminding one of the early Spanish settlers. This was Laurel Canyon and Ventura Boulevard, when I was a boy. Beyond, were rolling fields of wild flowers, foothills dotted with chaparral, oaks, eucalyptus, acacia and marauding coyotes; overhead the cerulean sky, hosting the dancing, ever-changing images concocted by abundant cumulus clouds. Our family, composed of three sons, was held together by a resolute mother and an easy-spirited father known as the Will Rogers of the Armenian community. The Depression was everywhere! Driving, the top down, I easily left the problems of the world behind, joyously seeking a painting "location." This day, something urged me, perhaps instinctively, to explore this replaced road of the early settlers. Leaving the hot macadam, I found the dirt road unchanged, unaltered since the early days of wagons, horse and mule trains. I wondered what the view of the valley would be like from the top of the hill, separating the valley from the Hollywood-Los Angeles basin. Just off the turn, facing a western landscape unchanged by human hands, excited with the prospect of finding a lovely, inspiring landscape subject, I saw this man and his truck! Sad, disconsolate and dejected, he sat on the running board of a truck that must have been home to his dreams and aspirations. While our family did not "suffer" through the depression, we were nevertheless sensitive to the needs of others. Conspicuous consumption was unthinkable - if at all possible. But now, alone with this man, broken, homeless, his only possession - his only means of making a living had come to a dead stop and he realized that he was at a dead end. This was the Depression! He had sold fruits and vegetables - driving through areas distant from local markets bringing fresh produce to waiting housewives. His loud and clear voice calling out in broken English, "bananas, tomato's, potato's," provided a needed service. A service he could no longer provide due to the impossibility of generating a "profit." How could one buy tires, gasoline and maintain a vehicle when lettuce sold for five cents a head, carrots were three bunches for a nickel, radishes sold for three cents a bunch, etc. The tires blew out, out of gas - in desperation, he propped up the wheels - a last hope that by keeping his truck from sinking, he might possibly

George Samerjan

Object Number 2016.01.07 Image

Title End Of The Line



Location Rack 2C

Date 1934

Era Depression Era Provenance

Medium Watercolor

Painting Size 24 3/4 X 20

Frame Size 28 X 23

Frame Type Brown/Grey, wooden

Materials

Artist Notes Near the Los Angeles City Hall - not far from the terminus of three major railroads...for many desperate if not hopeful men, America's boundary came to a dead end! It was the farthest west a free "ride of the rods" could take them! The "Great Depression," clutched tightly the economic arteries of the nation. These brave men, bearing silently their helplessness and the terrible hazards of cross-continent rail travel seeking employment, only to be met by shotgun-bearing Sheriffs. Obviously, it wasn't easy for men scrounging to survive to find an inaccessible hide-a-away. The sad flotsam gathered together with wire, piano crates and debris, thought to have little further use, became leantos - shelter, home! With a makeshift stove reminiscent of "salamanders" utilized by contractors and builders in cold climates, two men ponder their destiny! Stacks of wood, their protection from the cold California nights - their most evident asset. The discarded carcass of an abandoned car, in all likelihood a survivor of a cross-country trek...an all too familiar sight during the 1930's. The area was desolate, depressing and isolated - a true no-man's-land! Only those who experienced the catastrophic economic upheaval, unemployment of the '30's are, to me at least, acceptable witnesses to the degradation, humiliation and destructiveness people endured. I was 20 years old when I painted this watercolor and deeply sensitive as well as respectful of the privacy of these men - surviving - in poverty!

George Samerjan

Object Number 2016.01.08

Image

Title Men Playing Cards



Location Rack 2C

Date 1934

Era Depression Era

Provenance George Samerjan Studio, Hollywood, California, 1940-'41

Medium Watercolor

Painting Size 21 1/2 X 14 1/4

Frame Size 30 1/4 X 23 1/2

Frame Type Grey, wooden

Materials

Artist Notes Few people today can possibly understand the desperation and degradation that accompanied extended unemployment in a time when "safety nets" were unknown. The Great Depression was synonymous with an immovable wall of rejection, defeat, hunger, unemployment, homelessness - a daily chore with little hope was looking for work! Pain and suffering blanketed America. The womenfolk stayed home, kept house and were the special fabric of stability. The men, though work was elusive and virtually non-existent were up and out - "looking!" For a young aspiring art student, the group afforded an excellent opportunity to compose quickly and to execute deliberately. The dry California climate allows a watercolor painter to lay in washes and glazes without losing too much time to prolonged periods of drying. My presence did not disturb the card players and it is quite obvious that they are truly unemployed and not just homeless!

George Samerjan

Object Number 2016.04.03 Image

Title Oak Creek Canyon



Location Rack 2C

Date

Era Depression Era landscape Provenance

Medium Watercolor

Painting Size 27 X 21

Frame Size 34 1/2 X 28 1/2

Frame Type Silver/Red, wooden

Materials

Artist Notes Painted on our honeymoon

George Samerjan

Object Number	2016.04.08	Image
Title	Abraham Lincoln (Death Mask)	
Location	Rack 2C	
Date	1939	
Era	Depression Era	Provenance
Medium	Watercolor	
Painting Size	13 1/2 X 18	
Frame Size	20 X 24 1/2	
Frame Type	Light brown, wooden	
Materials		



Artist Notes

George Samerjan

Object Number	2016.04.09	Image
Title	Children Playing - On Swings	
Location	Rack 2C	
Date	1934	
Era	Depression Era	Provenance
Medium	Watercolor	
Painting Size	20 1/2 X 13	
Frame Size	31 X 23 1/4	
Frame Type	Multi-color, wooden	
Materials		



Artist Notes

George Samerjan

Object Number	2016.09.01	Image
Title	After The Storm - Piper's Opera House - Virginia City (California) - Nevada	
Location	Rack 2D	
Date		
Era	Depression Era	Provenance
Medium	Watercolor	
Painting Size	30 1/2 X 22 1/2	
Frame Size	Matted	
Frame Type		
Materials		



Artist Notes

George Samerjan

Object Number	2016.09.01	Image
Title	Fruit With Chair	
Location	Rack 2D	
Date		
Era	Depression Era	Provenance
Medium	Watercolor	
Painting Size	30 1/2 X 22 1/2	
Frame Size	Matted	
Frame Type		
Materials		



Artist Notes

George Samerjan

Object Number 2016.09.01 Image

Title Ranch In Mountains Scene

Location Rack 2D

Date

Era Depression Era landscape Provenance

Medium Watercolor

Painting Size 30 1/2 X 22 1/2

Frame Size Matted

Frame Type

Materials

Artist Notes



George Samerjan

Object Number	2016.09.01	Image
Title	Cow	
Location	Rack 2D	
Date		
Era	Depression Era	Provenance
Medium	Watercolor	
Painting Size	30 1/2 X 22 1/2	
Frame Size	Matted	
Frame Type		
Materials		



Artist Notes

George Samerjan

Object Number	2016.09.01	Image
Title	Girl on Tree Swing	
Location	Rack 2D	
Date	1935	
Era	Depression Era	Provenance
Medium	Watercolor	
Painting Size	22 X 17	
Frame Size	Matted	
Frame Type		
Materials		



Artist Notes

George Samerjan

Object Number	2016.09.02	Image
Title	Nude Woman on Blue	
Location	Rack 2D	
Date		
Era	Depression Era	Provenance
Medium	Watercolor	
Painting Size	15 X 10 1/2	
Frame Size	Matted	
Frame Type		
Materials		



Artist Notes

George Samerjan

Object Number	2016.09.02	Image
Title	Clown	
Location	Rack 2D	
Date		
Era	Depression Era	Provenance
Medium	Watercolor	
Painting Size	15 1/2 X 11	
Frame Size	Matted	
Frame Type		
Materials		



Artist Notes

George Samerjan

Object Number	2016.09.02	Image
Title	Flowers	
Location	Rack 2D	
Date		
Era	Depression Era	Provenance
Medium	Watercolor	
Painting Size	15 X 11	
Frame Size	Matted	
Frame Type		
Materials		



Artist Notes

George Samerjan

Object Number	2016.09.02	Image
Title	Westwood Garden	
Location	Rack 2D	
Date		
Era	Depression Era	Provenance
Medium	Watercolor	
Painting Size	15 X 11	
Frame Size	Matted	
Frame Type		
Materials		



Artist Notes

George Samerjan

Object Number	2016.09.02	Image
Title	Lumber Yard	
Location	Rack 2D	
Date		
Era	Depression Era	Provenance
Medium	Watercolor	
Painting Size	11 X 15	
Frame Size	Matted	
Frame Type		
Materials		



Artist Notes

George Samerjan

Object Number	2016.09.02	Image
Title	Children Playing Island Maui Buff	
Location	Rack 2D	
Date		
Era	Depression Era	Provenance
Medium	Watercolor	
Painting Size	23 X 16	
Frame Size	Matted	
Frame Type		
Materials		



Artist Notes

George Samerjan

Object Number 2016.09.02
Title Fishing Fleet

Image



Location Rack 2D

Date

Era Depression Era

Provenance Florida Southern College, Lakeland, Florida, Florida International Art Exhibition, Frank Lloyd Wright Campus, 1952; Grand Central Galleries: New York City, award winning paintings from the Florida Southern College Fine Arts Exhibition, sponsored by M. Grumbacher, June 2-13, 1952; Award: The M. Grumbacher Professional Watercolor Award

Medium Watercolor

Painting Size 22 X 14

Frame Size Matted

Frame Type

Materials

Artist Notes Late afternoon, driving along the Pacific coast highway near Redondo Beach, south of Los Angeles, I stopped my car, finding a convenient parking space to enjoy the view. Walking down to the shore, I found this narrow, wooden-slatted walkway that led to this gathering of boats, the wind sterring up the flags added a sense of celebration in contrast to the near silence. Quickly, I raced back to my car and set up my gear trying to establish the watercolor before the sun set. The fishermen were finishing their tasks as a pelican watched with anticipation - and I might add, with great patience. I loved the Pacific Ocean! The evening sea breeze sprinling its salty mist over one when painting, like a warm and loving embrace, is an unforgettable experience! (1935)

George Samerjan

Object Number 2016.09.03

Image

Title Shipyard



Location Rack 2D

Date

Era Depression Era

Provenance

Medium Watercolor

Painting Size 22 X 15

Frame Size Matted

Frame Type

Materials

Artist Notes

George Samerjan

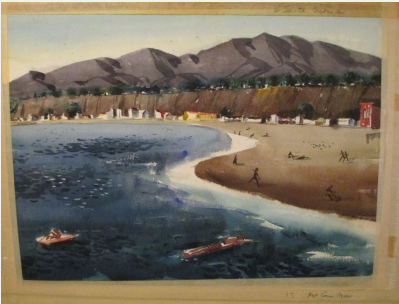
Object Number	2016.09.03	Image
Title	Popcorn Stand	
Location	Rack 2D	
Date		
Era	Depression Era	Provenance
Medium	Watercolor	
Painting Size	22 X 15	
Frame Size	Matted	
Frame Type		
Materials		



Artist Notes

George Samerjan

Object Number	2016.09.03	Image
Title	Santa Monica Beach	
Location	Rack 2D	
Date		
Era	Depression Era	Provenance
Medium	Watercolor	
Painting Size	22 X 15	
Frame Size	Matted	
Frame Type		
Materials		



Artist Notes

George Samerjan

Object Number 2016.09.03 Image

Title California Hill



Location Rack 2D

Date

Era Depression Era landscape Provenance

Medium Watercolor

Painting Size 22 X 15

Frame Size Matted

Frame Type

Materials

Artist Notes

George Samerjan

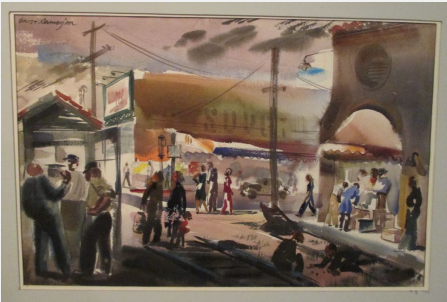
Object Number	2016.09.03	Image
Title	Winter Forrest	
Location	Rack 2D	
Date		
Era	Depression Era	Provenance
Medium	Watercolor	
Painting Size	22 X 15	
Frame Size	Matted	
Frame Type		
Materials		



Artist Notes

George Samerjan

Object Number	2016.09.03	Image
Title	Downtown	
Location	Rack 2D	
Date		
Era	Depression Era	Provenance
Medium	Watercolor	
Painting Size	22 X 15	
Frame Size	Matted	
Frame Type		
Materials		



Artist Notes

George Samerjan

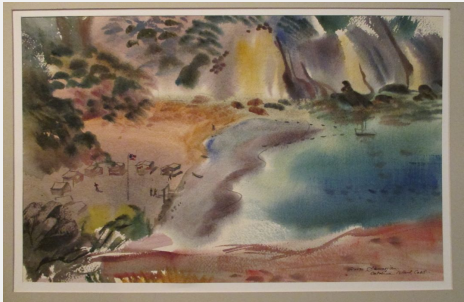
Object Number	2016.09.03	Image
Title	Woman Lounging in Green Dress	
Location	Rack 2D	
Date		
Era	Depression Era	Provenance
Medium	Watercolor	
Painting Size	22 X 15	
Frame Size	Matted	
Frame Type		
Materials		



Artist Notes

George Samerjan

Object Number	2016.09.03	Image
Title	Catalusa Island, California	
Location	Rack 2D	
Date		
Era	Depression Era landscape	Provenance
Medium	Watercolor	
Painting Size	22 X 15	
Frame Size	Matted	
Frame Type		
Materials		



Artist Notes

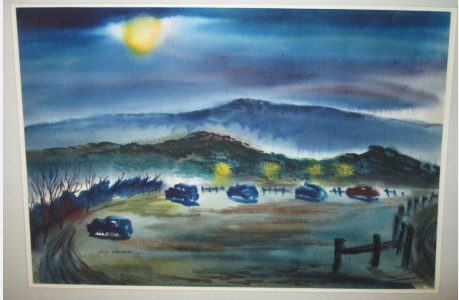
George Samerjan

Object Number	2016.09.03	Image
Title	Garage	
Location	Rack 2D	
Date		
Era	Depression Era	Provenance
Medium	Watercolor	
Painting Size	22 X 15	
Frame Size	Matted	
Frame Type		
Materials		



Artist Notes

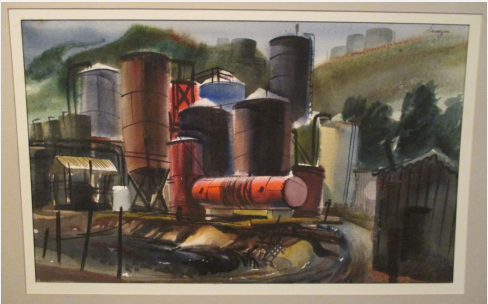
George Samerjan

Object Number	2016.09.03	Image
Title	Night Parking	
Location	Rack 2D	
Date		
Era	Depression Era	
Medium	Watercolor	
Painting Size	22 X 15	
Frame Size	Matted	
Frame Type		Provenance
Materials		

Artist Notes

George Samerjan

Object Number	2016.09.03	Image
Title	Industrial Factory	
Location	Rack 2D	
Date		
Era	Depression Era	Provenance
Medium	Watercolor	
Painting Size	22 X 15	
Frame Size	Matted	
Frame Type		
Materials		



Artist Notes

George Samerjan

Object Number	2016.09.03	Image
Title	Winter Trail	
Location	Rack 2D	
Date		
Era	Depression Era landscape	Provenance
Medium	Watercolor	
Painting Size	22 X 15	
Frame Size	Matted	
Frame Type		
Materials		



Artist Notes

George Samerjan

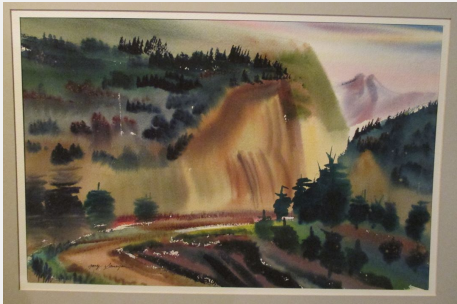
Object Number	2016.09.03	Image
Title	Building with Ironwork	
Location	Rack 2D	
Date		
Era	Depression Era	Provenance
Medium	Watercolor	
Painting Size	22 X 15	
Frame Size	Matted	
Frame Type		
Materials		



Artist Notes

George Samerjan

Object Number	2016.09.03	Image
Title	Mountain Pass, California	
Location	Rack 2D	
Date		
Era	Depression Era landscape	Provenance
Medium	Watercolor	
Painting Size	22 X 15	
Frame Size	Matted	
Frame Type		
Materials		



Artist Notes

George Samerjan

Object Number	2016.09.03	Image
Title	Rhyolite, Nevada	
Location	Rack 2D	
Date		
Era	Depression Era	Provenance
Medium	Watercolor	
Painting Size	22 X 15	
Frame Size	Matted	
Frame Type		
Materials		



Artist Notes

George Samerjan

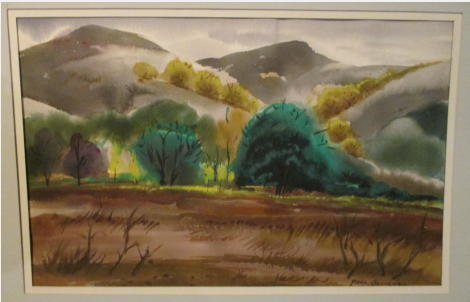
Object Number	2016.09.03	Image
Title	Cahuenga Pass, Hollywood, California (South of San Fernando Valley)	
Location	Rack 2D	
Date		
Era	Depression Era landscape	Provenance
Medium	Watercolor	
Painting Size	22 X 15	
Frame Size	Matted	
Frame Type		
Materials		



Artist Notes

George Samerjan

Object Number	2016.09.03	Image
Title	California Meadow	
Location	Rack 2D	
Date		
Era	Depression Era landscape	Provenance
Medium	Watercolor	
Painting Size	22 X 15	
Frame Size	Matted	
Frame Type		
Materials		



Artist Notes

George Samerjan

Object Number	2016.09.03	Image
Title	Tractor	
Location	Rack 2D	
Date		
Era	Depression Era	Provenance
Medium	Watercolor	
Painting Size	22 X 15	
Frame Size	Matted	
Frame Type		
Materials		



Artist Notes

George Samerjan

Object Number	2016.09.03	Image
Title	Cars in Small Town	
Location	Rack 2D	
Date		
Era	Depression Era	Provenance
Medium	Watercolor	
Painting Size	22 X 15	
Frame Size	Matted	
Frame Type		
Materials		



Artist Notes

George Samerjan

Object Number	2016.09.03	Image
Title	Woman With Red Bow	
Location	Rack 2D	
Date		
Era	Depression Era	Provenance
Medium	Watercolor	
Painting Size	22 X 15	
Frame Size	Matted	
Frame Type		
Materials		



Artist Notes

George Samerjan

Object Number	2016.09.03	Image
Title	Horses Eating In A Storm	
Location	Rack 2D	
Date		
Era	Depression Era	Provenance
Medium	Watercolor	
Painting Size	22 X 15	
Frame Size	Matted	
Frame Type		
Materials		



Artist Notes

George Samerjan

Object Number 2016.09.03 Image

Title Man Wearing Red Hat



Location Rack 2D

Date

Era Depression Era

Provenance

Medium Watercolor

Painting Size 15 X 22

Frame Size Matted

Frame Type

Materials

Artist Notes

George Samerjan

Object Number	2016.09.03	Image
Title	Silo	
Location	Rack 2D	
Date		
Era	Depression Era	Provenance
Medium	Watercolor	
Painting Size	22 X 15	
Frame Size	Matted	
Frame Type		
Materials		



Artist Notes

George Samerjan

Object Number2016.09.03

TitleChildren Playing in Puddle

Image



LocationRack 2D

Date

EraDepression Era

Provenance

MediumWatercolor

Painting Size22 X 15

Frame SizeMatted

Frame Type

Materials

Artist Notes

George Samerjan

Object Number	2016.09.03	Image
Title	Children in Lake (Row Boats)	
Location	Rack 2D	
Date		
Era	Depression Era	Provenance
Medium	Watercolor	
Painting Size	22 X 15	
Frame Size	Matted	
Frame Type		
Materials		



Artist Notes

George Samerjan

Object Number	2016.09.03	Image
Title	Café? Downtown	
Location	Rack 2D	
Date		
Era	Depression Era	Provenance
Medium	Watercolor	
Painting Size	22 X 15	
Frame Size	Matted	
Frame Type		
Materials		



Artist Notes

George Samerjan

Object Number	2016.09.03	Image
Title	Women in Pink And Green	
Location	Rack 2D	
Date		
Era	Depression Era	Provenance
Medium	Watercolor	
Painting Size	15 X 22	
Frame Size	Matted	
Frame Type		
Materials		



Artist Notes

George Samerjan

Object Number	2016.09.03	Image
Title	Girl Painting At Desk	
Location	Rack 2D	
Date		
Era	Depression Era	Provenance
Medium	Watercolor	
Painting Size	22 X 15	
Frame Size	Matted	
Frame Type		
Materials		



Artist Notes

George Samerjan

Object Number 2016.09.03 Image

Title Yosemite Stream



Location Rack 2D

Date

Era Depression Era landscape Provenance

Medium Watercolor

Painting Size 15 X 22

Frame Size Matted

Frame Type

Materials

Artist Notes

George Samerjan

Object Number	2016.09.03	Image
Title	Hot Plant	
Location	Rack 2D	
Date		
Era	Depression Era	Provenance
Medium	Watercolor	
Painting Size	19 X 15	
Frame Size	Matted	
Frame Type		
Materials		



Artist Notes

George Samerjan

Object Number	2016.09.04	Image
Title	Bianchi Farm, Paso Robles	
Location	Rack 2D	
Date		
Era	Depression Era	Provenance
Medium	Watercolor	
Painting Size	30 1/2 X 22 1/2	
Frame Size	Matted	
Frame Type		
Materials		



Artist Notes

George Samerjan

Object Number	2016.09.04	Image
Title	Man with Trucks	
Location	Rack 2D	
Date		
Era	Depression Era	Provenance
Medium	Watercolor	
Painting Size	30 1/2 X 22 1/2	
Frame Size	Matted	
Frame Type		
Materials		



Artist Notes

George Samerjan

Object Number 2016.09.05

Image

Title Cherub



Location Rack 2D

Date

Era Depression Era

Provenance

Medium Watercolor

Painting Size 22 1/2 X 29 1/2

Frame Size Matted

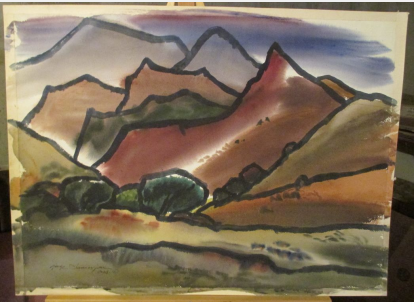
Frame Type

Materials

Artist Notes

George Samerjan

Object Number	2016.09.05	Image
Title	California Hills	
Location	Rack 2D	
Date		
Era	Depression Era landscape	Provenance
Medium	Watercolor	
Painting Size	30 X 22	
Frame Size	Matted	
Frame Type		
Materials		



Artist Notes

George Samerjan

Object Number	2016.09.05	Image
Title	Nude Sitting	
Location	Rack 2D	
Date		
Era	Depression Era	Provenance
Medium	Watercolor	
Painting Size	28 1/2 X 23	
Frame Size	Matted	
Frame Type		
Materials		



Artist Notes

George Samerjan

Object Number 2016.09.05 Image

Title Rocks Off The Coast



Location Rack 2D

Date

Era Depression Era landscape Provenance

Medium Watercolor

Painting Size 28 X 22

Frame Size Matted

Frame Type

Materials

Artist Notes

George Samerjan

Object Number	2016.09.05	Image
Title	Women Bathing In Stream	
Location	Rack 2D	
Date		
Era	Depression Era	Provenance
Medium	Watercolor	
Painting Size	28 X 22	
Frame Size	Matted	
Frame Type		
Materials		



Artist Notes

George Samerjan

Object Number	2016.09.05	Image
Title	Fall Storm	
Location	Rack 2D	
Date		
Era	Depression Era landscape	Provenance
Medium	Watercolor	
Painting Size	28 X 22	
Frame Size	Matted	
Frame Type		
Materials		



Artist Notes

George Samerjan

Object Number	2016.09.05	Image
Title	Tunnel	
Location	Rack 2D	
Date		
Era	Depression Era	Provenance
Medium	Watercolor	
Painting Size	22 X 15	
Frame Size	Matted	
Frame Type		
Materials		



Artist Notes

George Samerjan

Object Number 2016.09.05 Image

Title Fisherman At Pond



Location Rack 2D

Date

Era Depression Era Provenance

Medium Watercolor

Painting Size 15 X 22

Frame Size Matted

Frame Type

Materials

Artist Notes

George Samerjan

Object Number 2016.09.05 Image

Title Man On Green Tractor



Location Rack 2D

Date

Era Depression Era Provenance

Medium Watercolor

Painting Size 22 X 15

Frame Size Matted

Frame Type

Materials

Artist Notes

George Samerjan

Object Number 2016.09.05 Image

Title Girl Painting At Easel



Location Rack 2D

Date

Era Depression Era

Provenance

Medium Watercolor

Painting Size 24 X 19

Frame Size Matted

Frame Type

Materials

Artist Notes

George Samerjan

Object Number 2016.09.05
Title Furry Mammal

Image



Location Rack 2D

Date

Era Depression Era

Provenance

Medium Watercolor

Painting Size 24 X 18 1/2

Frame Size Matted

Frame Type

Materials

Artist Notes

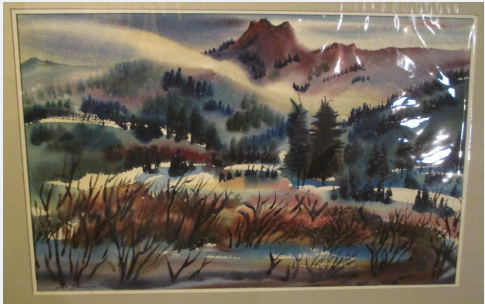
George Samerjan

Object Number	2016.09.06	Image
Title	Mt. Whitney, Painted In Storm	
Location	Rack 2D	
Date		
Era	Depression Era landscape	Provenance
Medium	Watercolor	
Painting Size	22 X 14	
Frame Size	Matted	
Frame Type		
Materials		
Artist Notes	Painted on the spot in snow storm	



George Samerjan

Object Number	2016.09.06	Image
Title	Mt. Whitney, From The Meadow	
Location	Rack 2D	
Date		
Era	Depression Era landscape	Provenance
Medium	Watercolor	
Painting Size	22 X 14	
Frame Size	Matted	
Frame Type		
Materials		



Artist Notes

George Samerjan

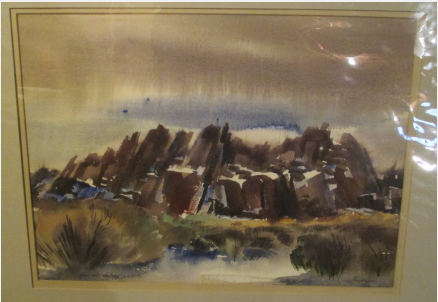
Object Number	2016.09.06	Image
Title	The Stream, Yosemite	
Location	Rack 2D	
Date		
Era	Depression Era landscape	Provenance
Medium	Watercolor	
Painting Size	22 X 14	
Frame Size	Matted	
Frame Type		
Materials		



Artist Notes

George Samerjan

Object Number	2016.09.06	Image
Title	Mt. Whitney, From The Desert Floor	
Location	Rack 2D	
Date		
Era	Depression era landscape	Provenance
Medium	Watercolor	
Painting Size	22 X 14	
Frame Size	Matted	
Frame Type		
Materials		



Artist Notes

George Samerjan

Object Number	2016.09.06	Image
Title	Fishing Friends On Path	
Location	Rack 2D	
Date		
Era	Depression Era landscape	Provenance
Medium	Watercolor	
Painting Size	22 X 14	
Frame Size	Matted	
Frame Type		
Materials		



Artist Notes

George Samerjan

Object Number 2016.09.06 Image

Title Near Lake Tahoe



Location Rack 2D

Date

Era Depression Era landscape Provenance

Medium Watercolor

Painting Size 22 X 14

Frame Size Matted

Frame Type

Materials

Artist Notes

George Samerjan

Object Number 2016.09.06 Image

Title YMCA Boy's Camp, Santa Catalina Island



Location Rack 2D

Date

Era Depression Era

Provenance

Medium Watercolor

Painting Size 22 X 14

Frame Size Matted

Frame Type

Materials

Artist Notes In my youth, I was an active boy's worker in the Hollywood, California YMCA. The Secretary, Sheldon Swenson called me at home one day and said "The Pasadena YMCA wished to invite a boy's camp leader from our 'Y' to join their group at Catalina Island, are you interested, George?" Of course I was delighted. Packing my suitcase carefully, I found room for my painting materials. The summer was a rich and beautiful experience. This watercolor is one of many that I was able to paint in my spare time. Outdoors, the boys are listening and participating in a group discussion. On a day off, one of the youth counselors talked me into joining him in sailing a small craft, a "snow bird." In spite of the fact that I warned him of my complete ignorance of sailing, soon we were sailing majestically in the bay, the wind carrying us away from shore, ocean spray and sunshine coupled with the joy and ecstasy of an exhilarating experience - suddenly turned into imminent disaster. Out of nowhere, the Catalina Steamship was virtually on top of us. Inadvertently, and quite innocently, we had sailed into the ship lane. The warning whistle of the steamship became increasingly menacing and bellicose. Passengers became terrified and screamed instructions to my friend at the tiller. I pleaded with him as well to move away from the path of the giant ship nearly on top of us...the passengers continued screaming and trying desperately to help us avoid disaster shouted nautical terms and instructions - to no avail. My friend turned to me and said, "George, you take over, it's the first time I've sailed a boat!" Avoiding panic, somehow, I took the tiller and was able to sail back to shore.

George Samerjan

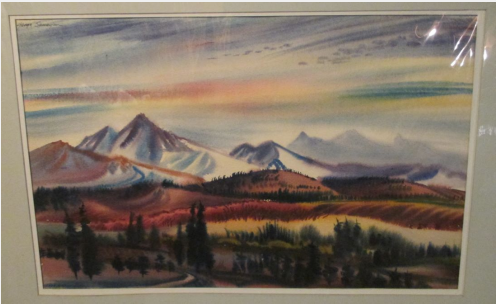
Object Number	2016.09.06	Image
Title	Creek In Forrest	
Location	Rack 2D	
Date		
Era	Depression Era	Provenance
Medium	Watercolor	
Painting Size	22 X 14	
Frame Size	Matted	
Frame Type		
Materials		



Artist Notes

George Samerjan

Object Number	2016.09.06	Image
Title	Lone Pine, View Of The High Sierras	
Location	Rack 2D	
Date		
Era	Depression Era landscape	Provenance
Medium	Watercolor	
Painting Size	22 X 14	
Frame Size	Matted	
Frame Type		
Materials		



Artist Notes

George Samerjan

Object Number	2016.09.07	Image
Title	Men Playing Cards - Westlake Park, LA	
Location	Rack 2D	
Date	1934	
Era	Depression Era	Provenance
Medium	Watercolor	
Painting Size	22 1/2 X 16	
Frame Size	Matted	
Frame Type		
Materials		



Artist Notes

George Samerjan

Object Number	2016.09.07	Image
Title	Victorian Houses	
Location	Rack 2D	
Date	1937	
Era	Depression Era	Provenance
Medium	Watercolor	
Painting Size	22 1/2 X 16	
Frame Size	Matted	
Frame Type		
Materials		



Artist Notes

George Samerjan

Object Number	2016.09.07	Image
Title	Near Whittier, California	
Location	Rack 2D	
Date	1936	
Era	Depression Era	Provenance
Medium	Watercolor	
Painting Size	22 1/2 X 12 1/2	
Frame Size	Matted	
Frame Type		
Materials		



Artist Notes

George Samerjan

Object Number	2016.09.07	Image
Title	Circus Worker Resting	
Location	Rack 2D	
Date		
Era	Depression Era	Provenance
Medium	Watercolor	
Painting Size	24 1/2 X 17 1/2	
Frame Size	Matted	
Frame Type		
Materials		



Artist Notes

George Samerjan

Object Number 2016.09.07

Image

Title Refinery - LA

Location Rack 2D

Date

Era Depression Era

Provenance

Medium Watercolor

Painting Size 23 X 15

Frame Size Matted


Frame Type

Materials

Artist Notes



George Samerjan

Object Number	2016.09.07	Image
Title	Trees Around Lake	
Location	Rack 2D	
Date		
Era	Depression Era	
Medium	Watercolor	
Painting Size	22 1/2 X 14 1/2	
Frame Size	Matted	
Frame Type		Provenance
Materials		

Artist Notes

George Samerjan

Object Number 2016.09.07
Title Refinery At Torrance

Image



Location Rack 2D

Date

Era Depression Era

Provenance The Armenian Allied Arts Association of Southern California, 1938; Pennsylvania Academy of Fine Arts Annual Exhibition, Philadelphia, Pennsylvania, 1938

Medium Watercolor

Painting Size 21 X 13 1/2

Frame Size Matted

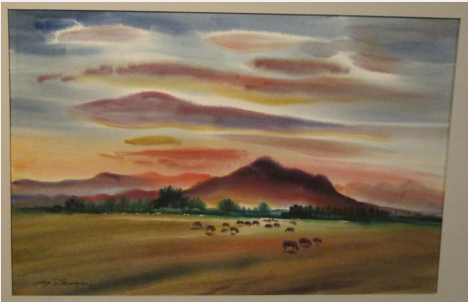
Frame Type

Materials

Artist Notes

George Samerjan

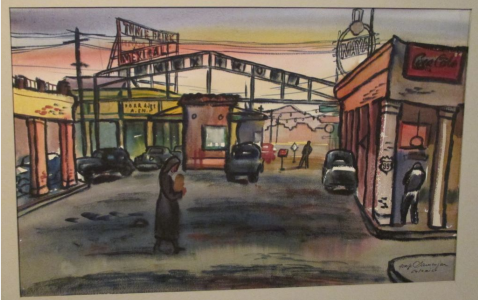
Object Number	2016.09.07	Image
Title	Mexico	
Location	Rack 2D	
Date		
Era	Depression Era landscape	Provenance
Medium	Watercolor	
Painting Size	23 X 15	
Frame Size	Matted	
Frame Type		
Materials		



Artist Notes

George Samerjan

Object Number	2016.09.07	Image
Title	Calexico Looking To Mexicali	
Location	Rack 2D	
Date		
Era	Depression Era	Provenance
Medium	Watercolor	
Painting Size	23 X 15	
Frame Size	Matted	
Frame Type		
Materials		



Artist Notes

George Samerjan

Object Number 2016.09.07

Image

Title Colleen



Location Rack 2D

Date

Era Depression Era

Provenance

Medium Watercolor

Painting Size 15 X 22

Frame Size Matted

Frame Type

Materials

Artist Notes

George Samerjan

Object Number	2016.09.07	Image
Title	Laguna Beach, California	
Location	Rack 2D	
Date		
Era	Depression Era landscape	Provenance
Medium	Watercolor	
Painting Size	22 1/2 X 15	
Frame Size	Matted	
Frame Type		
Materials		



Artist Notes

George Samerjan

Object Number 2016.09.07

Image

Title Culver City



Location Rack 2D

Date

Era Depression Era

Provenance

Medium Watercolor

Painting Size 28 X 22

Frame Size Matted

Frame Type

Materials

Artist Notes

George Samerjan

Object Number	2016.09.07	Image
Title	Farmhand	
Location	Rack 2D	
Date		
Era	Depression Era	Provenance
Medium	Watercolor	
Painting Size	25 X 19	
Frame Size	Matted	
Frame Type		
Materials		



Artist Notes

George Samerjan

Object Number	2016.09.07	Image
Title	Ceramic Pots In Yard	
Location	Rack 2D	
Date		
Era	Depression Era	Provenance
Medium	Watercolor	
Painting Size	21 1/2 X 14 1/2	
Frame Size	Matted	
Frame Type		
Materials		



Artist Notes

George Samerjan

Object Number 2016.09.07

Image

Title Westlake Park, May, 1938



Location Rack 2D

Date 1938

Era Depression Era

Provenance George Samerjan Studio, Hollywood, California - 1947
Sunset Boulevard, 1940

Medium Watercolor

Painting Size 22 X 14

Frame Size Matted

Frame Type

Materials

Artist Notes Westlake Park was located a few blocks away from Art Center School where I was a scholarship student. It was my work "assignment" to sweep out the entire school - all classrooms, offices, etc. before classes started. On those occasions when I was able to complete my chores earlier than usual, I would race to some area - such as the park and paint a watercolor. I made it a point to paint one watercolor daily! The abstraction of a painting was frowned upon when I was a student. In many ways I felt that I was a "traitor" - at least made to feel that way, whenever I ventured away from traditional, academic and/or realistic painting. Westlake Park holds a special place in my heart. It was here that I enjoyed sitting and eating my "brown-bag" lunch. Usually, a little bag with unexpected tasty morsels neatly wrapped in wax paper. My mother pursued a consistent and very definite menu when she packed my lunch. While bountiful and delicious, lunches packed by my father had a distinctive character of their own. To say the least, they revealed an unbelievable inventiveness in variety and the transformation of eggplant and cauliflower into delectable delicacies was sheer magic! These two watercolors were painted within a few days of each other. There wasn't the slightest encouragement when I was a student to explore abstraction - which I always enjoyed. After all, when I was a student at Hollywood High School, I was given a lasting and precious introduction to great modern art by a famous collector-neighbor. One day, on my way home from school, he was watering the lawn in the front of his house. He was so pleased to know that I intended to become an artist - an unlikely pursuit for a young man during the Great Depression. "Would you like to see our paintings?" he asked, I was of course thrilled! He turned off the nozzle of the hose and we walked up a few cement steps that led to a picket gate that closed off the back yard. A man in a white coverall was trimming and shaping exotic looking shrubs. As we passed, the small man turned and looked at me. Matter of factly, my hose said, "That is Brancusi!" I was given a personal room by room tour of a home studded with paintings. One could not find a spare inch of space on the walls - floor to ceiling. When he introduced me to Mrs. Arensberg he said, "It is she who aroused my interest in modern art." This was the first of many times that I was privileged to see the Arensberg Collection - in the home of the collectors. I was twenty-three years of age when I painted these watercolors. The "traditional" painting required little intellectual application. The California School of watercolor painting - wet-into-wet, is ideal when painting outdoors. Whether landscape or seascape, lovely transparent washes of luscious color blending into a unified tone - impossible with other mediums, helps convey the sparkling light of Southern California...realistically. Another day, looking at the exact same subject, my reaction was exhilarating! Instantly, elevations, planes, vanishing points, true height lines - and color values

George Samerjan

Object Number	2016.09.07	Image
Title	Coffee Grower Junkyard	
Location	Rack 2D	
Date		
Era	Depression Era	Provenance
Medium	Watercolor	
Painting Size	22 x 15	
Frame Size	Matted	
Frame Type		
Materials		



Artist Notes

George Samerjan

Object Number	2016.09.07	Image
Title	Nude With Basket Of Fruit	
Location	Rack 2D	
Date	1934	
Era	Depression Era	Provenance
Medium	Watercolor	
Painting Size	23 X 16	
Frame Size	Matted	
Frame Type		
Materials		



Artist Notes

George Samerjan

Object Number	2016.09.07	Image
Title	Coast at Sunset	
Location	Rack 2D	
Date		
Era	Depression era landscape	Provenance
Medium	Watercolor	
Painting Size	22 X 14	
Frame Size	Matted	
Frame Type		
Materials		



Artist Notes

George Samerjan

Object Number	2016.09.07	Image
Title	Snow At Mt. Baldy, California	
Location	Rack 2D	
Date		
Era	Depression Era landscape	Provenance
Medium	Watercolor	
Painting Size	22 X 15 1/2	
Frame Size	Matted	
Frame Type		
Materials		



Artist Notes

George Samerjan

Object Number	2016.09.07	Image
Title	On The Beach - Santa Monica	
Location	Rack 2D	
Date	1935	
Era	Depression Era	Provenance
Medium	Watercolor	
Painting Size	22 X 15	
Frame Size	Matted	
Frame Type		
Materials		



Artist Notes

George Samerjan

Object Number	2016.09.07	Image
Title	Tong War, Los Angeles	
Location	Rack 2D	
Date		
Era	Depression Era	Provenance
Medium	Watercolor	
Painting Size	22 X 15	
Frame Size	Matted	
Frame Type		
Materials		



Artist Notes

George Samerjan

Object Number2016.09.07

TitleFour Men In The Park

Image



LocationRack 2D

Date1934

EraDepression Era

MediumWatercolor

Painting Size22 X 15

Frame SizeMatted

Frame Type

Materials

Provenance

Artist Notes

George Samerjan

Object Number	2016.09.08	Image
Title	Clifford DeVirian - Student - Art Center	
Location	Rack 2D	
Date		
Era	Depression Era	Provenance
Medium	Oil	
Painting Size	16 x 20	
Frame Size	Canvas	
Frame Type		
Materials		



Artist Notes

George Samerjan

Object Number 2016.09.08

Image

Title Pin Seller



Location Rack 2D

Date

Era Depression Era

Provenance

Medium Oil

Painting Size 16 X 20

Frame Size Canvas

Frame Type

Materials

Artist Notes

George Samerjan

Object Number	2016.09.08	Image
Title	3 Cavorting Figures	
Location	Rack 2D	
Date		
Era	Depression Era	Provenance
Medium	Oil	
Painting Size	23 1/2 X 16	
Frame Size	Canvas	
Frame Type		
Materials		



Artist Notes

George Samerjan

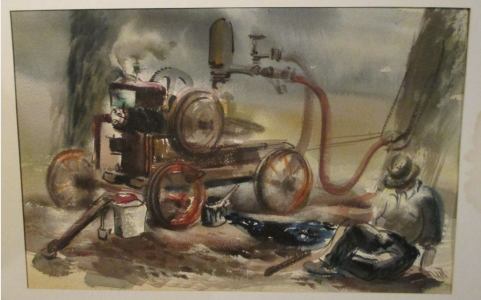
Object Number	2016.09.08	Image
Title	Male - Full Figure	
Location	Rack 2D	
Date		
Era	Depression Era	Provenance
Medium	Oil	
Painting Size	20 X 35	
Frame Size	Canvas	
Frame Type		
Materials		



Artist Notes

George Samerjan

Object Number	2016.09.09	Image
Title	Water Truck	
Location	Rack 2D	
Date		
Era	Depression Era	Provenance
Medium	Watercolor	
Painting Size	22 1/2 X 15	
Frame Size	Matted	
Frame Type		
Materials		



Artist Notes

George Samerjan

Object Number 2016.09.09
Title Black Nude

Image



Location Rack 2D

Date 1939

Era Depression Era

Provenance

Medium Watercolor

Painting Size 13 X 14

Frame Size Matted

Frame Type

Materials

Artist Notes

George Samerjan

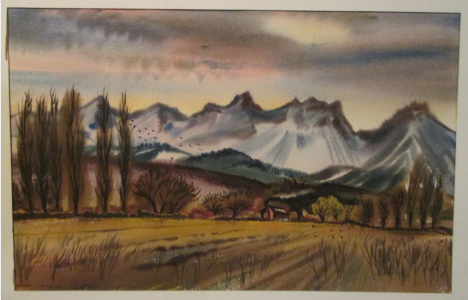
Object Number	2016.09.09	Image
Title	Nude With Hair	
Location	Rack 2D	
Date		
Era	Depression Era	Provenance
Medium	Watercolor	
Painting Size	15 X 18 3/4	
Frame Size	Matted	
Frame Type		
Materials		



Artist Notes

George Samerjan

Object Number	2016.09.09	Image
Title	Farm In Mountains	
Location	Rack 2D	
Date		
Era	Depression Era landscape	Provenance
Medium	Watercolor	
Painting Size	21 1/2 X 14 1/2	
Frame Size	Matted	
Frame Type		
Materials		



Artist Notes

George Samerjan

Object Number 2016.09.09 Image

Title Boys With Boat



Location Rack 2D

Date

Era Depression Era Provenance

Medium Watercolor

Painting Size 15 X 22

Frame Size Matted

Frame Type

Materials

Artist Notes

George Samerjan

Object Number 2016.09.09

Image

Title **Nude**



Location Rack 2D

Date

Era Depression Era

Provenance

Medium Watercolor

Painting Size 12 X 22 1/2

Frame Size Matted

Frame Type

Materials

Artist Notes

George Samerjan

Object Number 2016.09.09 Image

Title Snowy Mountain



Location Rack 2D

Date

Era Depression Era landscape Provenance

Medium Watercolor

Painting Size 15 X 22

Frame Size Matted

Frame Type

Materials

Artist Notes

George Samerjan

Object Number	2016.09.09	Image
Title	Mojave Desert - Sunset	
Location	Rack 2D	
Date		
Era	Depression Era landscape	Provenance
Medium	Watercolor	
Painting Size	15 X 22	
Frame Size	Matted	
Frame Type		
Materials		



Artist Notes

George Samerjan

Object Number 2016.09.09 Image

Title Man With Pipe



Location Rack 2D

Date 1938

Era Depression Era Provenance

Medium Watercolor

Painting Size 15 X 22

Frame Size Matted

Frame Type

Materials

Artist Notes

George Samerjan

Object Number	2016.09.09	Image
Title	Woman	
Location	Rack 2D	
Date		
Era	Depression Era	Provenance
Medium	Watercolor	
Painting Size	15 X 22	
Frame Size	Matted	
Frame Type		
Materials		



Artist Notes

George Samerjan

Object Number	2016.09.09	Image
Title	Woman With Chair	
Location	Rack 2D	
Date		
Era	Depression Era	Provenance
Medium	Watercolor	
Painting Size	15 X 22	
Frame Size	Matted	
Frame Type		
Materials		



Artist Notes

George Samerjan

Object Number	2016.09.09	Image
Title	Refinery, LA	
Location	Rack 2D	
Date		
Era	Depression Era	Provenance
Medium	Watercolor	
Painting Size	15 X 22	
Frame Size	Matted	
Frame Type		
Materials		



Artist Notes

George Samerjan

Object Number 2016.09.09 Image

Title Santa Monica In Moonlight



Location Rack 2D

Date

Era Depression Era Provenance

Medium Watercolor

Painting Size 15 X 22

Frame Size Matted

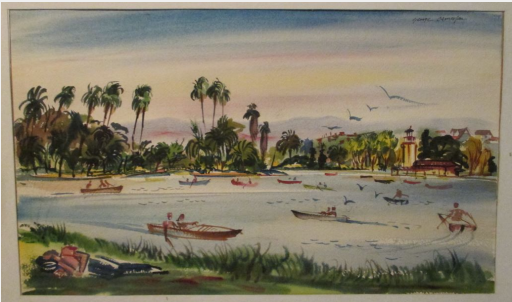
Frame Type

Materials

Artist Notes

George Samerjan

Object Number	2016.09.09	Image
Title	Westlake Park, LA	
Location	Rack 2D	
Date	1938	
Era	Depression Era	Provenance
Medium	Watercolor	
Painting Size	15 X 22	
Frame Size	Matted	
Frame Type		
Materials		



Artist Notes

George Samerjan

Object Number 2016.09.09 Image

Title Vase With Flowers



Location Rack 2D

Date

Era Depression Era Provenance

Medium Watercolor

Painting Size 19 X 25

Frame Size Matted

Frame Type

Materials

Artist Notes

George Samerjan

Object Number	2016.09.10	Image
Title	Men In Park	
Location	Rack 2D	
Date		
Era	Depression Era	Provenance
Medium	Watercolor	
Painting Size	21 1/2 X 14 1/2	
Frame Size	Matted	
Frame Type		
Materials		



Artist Notes

George Samerjan

Object Number 2016.09.10 Image

Title Man And Wheelbarrow



Location Rack 2D

Date

Era Depression Era Provenance

Medium Watercolor

Painting Size 21 X 15

Frame Size Matted

Frame Type

Materials

Artist Notes

George Samerjan

Object Number	2016.09.10	Image
Title	Children's Playground	
Location	Rack 2D	
Date		
Era	Depression Era	Provenance
Medium	Watercolor	
Painting Size	21 X 15	
Frame Size	Matted	
Frame Type		
Materials		



Artist Notes

George Samerjan

Object Number	2016.09.10	Image
Title	Migrant Family's Car and Tent	
Location	Rack 2D	
Date		
Era	Depression Era	Provenance
Medium	Watercolor	
Painting Size	21 X 15	
Frame Size	Matted	
Frame Type		
Materials		



Artist Notes

George Samerjan

Object Number 2016.09.10

Image

Title Clown



Location Rack 2D

Date

Era Depression Era

Provenance

Medium Watercolor

Painting Size 14 1/2 X 21

Frame Size Matted

Frame Type

Materials

Artist Notes

George Samerjan

Object Number 2016.09.10 Image

Title American Bald Eagle, Griffith
Park Zoo, Los Angeles

Location Rack 2D

Date

Era Depression Era Provenance

Medium Watercolor

Painting Size 23 1/2 X 18

Frame Size Matted

Frame Type

Materials

Artist Notes



George Samerjan

Object Number	2016.09.10	Image
Title	Mozart Teaches Beethoven	
Location	Rack 2D	
Date		
Era	Depression Era	Provenance
Medium	Watercolor	
Painting Size	15 X 22	
Frame Size	Matted	
Frame Type		
Materials		



Artist Notes

George Samerjan

Object Number	2016.09.10	Image
Title	Outdoor Garden Accessories	
Location	Rack 2D	
Date		
Era	Depression Era	Provenance
Medium	Watercolor	
Painting Size	22 X 15	
Frame Size	Matted	
Frame Type		
Materials		



Artist Notes

George Samerjan

Object Number 2016.09.10

Image

Title Joey



Location Rack 2D

Date

Era Depression Era

Provenance

Medium Watercolor

Painting Size 19 1/2 X 16 1/2

Frame Size Matted

Frame Type

Materials

Artist Notes

George Samerjan

Object Number	2016.09.10	Image
Title	Catalina Yacht	
Location	Rack 2D	
Date		
Era	Depression Era	Provenance
Medium	Watercolor	
Painting Size	22 X 15	
Frame Size	Matted	
Frame Type		
Materials		



Artist Notes

George Samerjan

Object Number 2016.09.10

Image

Title Fisherman

Location Rack 2D

Date

Era Depression Era

Provenance

Medium Watercolor

Painting Size 15 X 22

Frame Size Matted

Frame Type

Materials

Artist Notes



George Samerjan

Object Number	2016.09.10	Image
Title	Semi Nude	
Location	Rack 2D	
Date		
Era	Depression Era	Provenance
Medium	Watercolor	
Painting Size	22 X 15	
Frame Size	Matted	
Frame Type		
Materials		



Artist Notes

George Samerjan

Object Number	2016.09.10	Image
Title	Model - Jane Fores - Art Center School LA	
Location	Rack 2D	
Date		
Era	Depression Era	Provenance
Medium	Watercolor	
Painting Size	22 X 15	
Frame Size	Matted	
Frame Type		
Materials		



Artist Notes

George Samerjan

Object Number	2016.09.10	Image
Title	Dancers	
Location	Rack 2D	
Date	1937	
Era	Depression Era	Provenance
Medium	Watercolor	
Painting Size	22 X 15	
Frame Size	Matted	
Frame Type		
Materials		



Artist Notes

George Samerjan

Object Number	2016.09.10	Image
Title	Negroe Young Man	
Location	Rack 2D	
Date		
Era	Depression Era	Provenance
Medium	Watercolor	
Painting Size	22 X 15	
Frame Size	Matted	
Frame Type		
Materials		



Artist Notes

George Samerjan

Object Number	2016.09.10	Image
Title	Experimental Seated Nude	
Location	Rack 2D	
Date		
Era	Depression Era	Provenance
Medium	Watercolor	
Painting Size	22 X 15	
Frame Size	Matted	
Frame Type		
Materials		



Artist Notes

George Samerjan

Object Number	2016.09.10	Image
Title	Seated Old Man	
Location	Rack 2D	
Date		
Era	Depression Era	Provenance
Medium	Watercolor	
Painting Size	15 X 22	
Frame Size	Matted	
Frame Type		
Materials		



Artist Notes

George Samerjan

Object Number 2016.09.10
Title Prismatic Nude

Image



Location Rack 2D

Date

Era Depression Era

Provenance

Medium Watercolor

Painting Size 15 X 22

Frame Size Matted

Frame Type

Materials

Artist Notes

George Samerjan

Object Number 2016.09.10

Image

Title Sad Girl



Location Rack 2D

Date

Era Depression Era

Provenance

Medium Watercolor

Painting Size 14 X 18

Frame Size Matted

Frame Type

Materials

Artist Notes

George Samerjan

Object Number	2016.09.10	Image
Title	Nude	
Location	Rack 2D	
Date		
Era	Depression Era	Provenance
Medium	Watercolor	
Painting Size	15 X 22	
Frame Size	Matted	
Frame Type		
Materials		



Artist Notes

George Samerjan

Object Number	2016.09.10	Image
Title	Model Sitting	
Location	Rack 2D	
Date		
Era	Depression Era	Provenance
Medium	Watercolor	
Painting Size	22 X 15	
Frame Size	Matted	
Frame Type		
Materials		



Artist Notes

George Samerjan

Object Number	2016.09.10	Image
Title	Woman In Color	
Location	Rack 2D	
Date		
Era	Depression Era	Provenance
Medium	Watercolor	
Painting Size	12 X 16	
Frame Size	Matted	
Frame Type		
Materials		



Artist Notes

George Samerjan

Object Number	2016.09.10	Image
Title	Nude	
Location	Rack 2D	
Date		
Era	Depression Era	Provenance
Medium	Watercolor	
Painting Size	17 X 24	
Frame Size	Matted	
Frame Type		
Materials		



Artist Notes

George Samerjan

Object Number 2016.09.10

Image

Title Nude - Oil



Location Rack 2D

Date

Era Depression Era

Provenance

Medium Oil

Painting Size 16 X 23 1/2

Frame Size Canvas

Frame Type

Materials

Artist Notes

George Samerjan

Object Number 2016.09.11 Image

Title Going Home



Location Rack 2D

Date

Era Depression Era landscape Provenance

Medium Watercolor

Painting Size 23 X 17 1/2

Frame Size Matted

Frame Type

Materials

Artist Notes

George Samerjan

Object Number	2016.09.11	Image
Title	Southern California Horse Farm	
Location	Rack 2D	
Date		
Era	Depression Era landscape	Provenance
Medium	Watercolor	
Painting Size	15 X 22	
Frame Size	Matted	
Frame Type		
Materials		



Artist Notes

George Samerjan

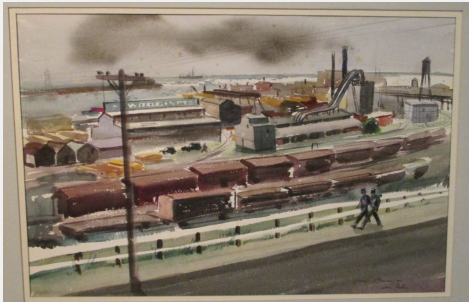
Object Number	2016.09.11	Image
Title	Horses Eating In A Storm	
Location	Rack 2D	
Date		
Era	Depression Era	Provenance
Medium	Watercolor	
Painting Size	22 X 15	
Frame Size	Matted	
Frame Type		
Materials		



Artist Notes

George Samerjan

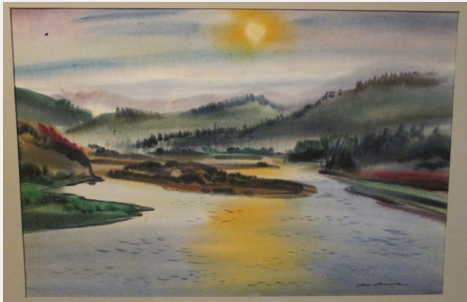
Object Number	2016.09.11	Image
Title	San Pedro Across From The YMCA	
Location	Rack 2D	
Date		
Era	Depression Era	Provenance
Medium	Watercolor	
Painting Size	22 X 15	
Frame Size	Matted	
Frame Type		
Materials		



Artist Notes

George Samerjan

Object Number	2016.09.11	Image
Title	Rogue River	
Location	Rack 2D	
Date		
Era	Depression Era	Provenance
Medium	Watercolor	
Painting Size	22 X 15	
Frame Size	Matted	
Frame Type		
Materials		



Artist Notes

George Samerjan

Object Number	2016.09.11	Image
Title	Venice CA	
Location	Rack 2D	
Date		
Era	Depression Era	Provenance
Medium	Watercolor	
Painting Size	18 X 24	
Frame Size	Matted	
Frame Type		
Materials		



Artist Notes

George Samerjan

Object Number	2016.09.11	Image
Title	How Green Was My Valley - Movie Set, California	
Location	Rack 2D	
Date		
Era	Depression Era	Provenance
Medium	Watercolor	
Painting Size	23 X 17	
Frame Size	Matted	
Frame Type		
Materials		



Artist Notes

George Samerjan

Object Number 2016.09.11

Image

Title Drillers



Location Rack 2D

Date

Era Depression Era

Provenance The Fine Arts Gallery of San Diego, California, Tenth Annual southern California Art Exhibition, June 10 - September 5, 1938

Medium Watercolor

Painting Size 14 X 22 1/2

Frame Size Matted

Frame Type

Materials

Artist Notes Imagine a 22 year old being permitted to set up his easel on a drilling platform! The men, wearing fedoras, went about their duties puzzled by my enthusiasm. They thought-why waster your time painting our dirty, smelly world? With the cool breezes of the Pacific Ocean (the scene is Signal Hill) sweeping across my easel, mingled with the heavy odor of crude, the basso vibrations permeating the area and rocking my entire body - I felt one with the exploration!

George Samerjan

Object Number	2016.09.11	Image
Title	Bridle Path, LA	
Location	Rack 2D	
Date		
Era	Depression Era	Provenance
Medium	Watercolor	
Painting Size	22 X 15	
Frame Size	Matted	
Frame Type		
Materials		



Artist Notes

George Samerjan

Object Number	2016.09.11	Image
Title	Fishing	
Location	Rack 2D	
Date		
Era	Depression Era	Provenance
Medium	Watercolor	
Painting Size	22 X 15	
Frame Size	Matted	
Frame Type		
Materials		



Artist Notes

George Samerjan

Object Number	2016.09.11	Image
Title	Cowboys	
Location	Rack 2D	
Date		
Era	Depression Era landscape	Provenance
Medium	Watercolor	
Painting Size	22 X 15	
Frame Size	Matted	
Frame Type		
Materials		



Artist Notes

George Samerjan

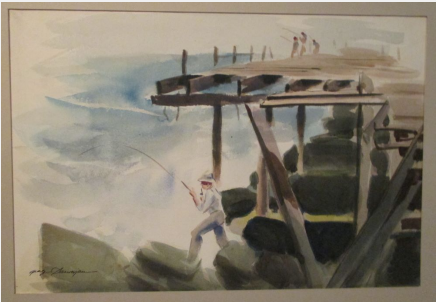
Object Number	2016.09.11	Image
Title	Desert Ruins	
Location	Rack 2D	
Date		
Era	Depression Era	Provenance
Medium	Watercolor	
Painting Size	22 X 15	
Frame Size	Matted	
Frame Type		
Materials		



Artist Notes

George Samerjan

Object Number	2016.09.11	Image
Title	Fishing Pier	
Location	Rack 2D	
Date		
Era	Depression Era	Provenance
Medium	Watercolor	
Painting Size	22 X 15	
Frame Size	Matted	
Frame Type		
Materials		



Artist Notes

George Samerjan

Object Number	2016.09.11	Image
Title	California Beach	
Location	Rack 2D	
Date		
Era	Depression Era	Provenance
Medium	Watercolor	
Painting Size	22 X 15	
Frame Size	Matted	
Frame Type		
Materials		



Artist Notes

George Samerjan

Object Number	2016.09.11	Image
Title	Yosemite River	
Location	Rack 2D	
Date		
Era	Depression Era landscape	Provenance
Medium	Watercolor	
Painting Size	22 X 15	
Frame Size	Matted	
Frame Type		
Materials		



Artist Notes

George Samerjan

Object Number	2016.09.11	Image
Title	Mermaids	
Location	Rack 2D	
Date		
Era	Depression Era	Provenance
Medium	Watercolor	
Painting Size	22 X 15	
Frame Size	Matted	
Frame Type		
Materials		



Artist Notes

George Samerjan

Object Number	2016.09.11	Image
Title	Sunset - Hollywood Hills	
Location	Rack 2D	
Date		
Era	Depression Era landscape	Provenance
Medium	Watercolor	
Painting Size	22 X 15	
Frame Size	Matted	
Frame Type		
Materials		



Artist Notes

George Samerjan

Object Number 2016.09.09 Image

Title Man In Top Hat



Location Rack 2D

Date

Era Depression Era Provenance

Medium Oil

Painting Size 24 X 30

Frame Size Canvas

Frame Type

Materials

Artist Notes

George Samerjan

Object Number 2016.09.09 Image

Title Woman With Book



Location Rack 2D

Date

Era Depression Era Provenance

Medium Oil

Painting Size 25 X 29 1/2

Frame Size Canvas

Frame Type

Materials

Artist Notes

George Samerjan

Object Number 2016.11.04

Image

Title Southern Belle



Location Upstairs

Date

Era Depression Era

Provenance Laguna Beach, California, 20th Annual Prize Exhibition Laguna Beach Art Association, August-September, 1938; Tuscon, Arizona, Fine Arts Gallery, November 6 - December 2, 1938; Gardena, California, Gardena High School 12th Annual Invitational Purchase Prize Exhibition, August - September, 1939; Sacramento, California, California State Fair, September, 1939; Occidental College, Los Angeles, Samerjan One-man show, January 2-23, 1940; Oakland Art Gallery, 8th Annual Exhibition Watercolors, April 3-27, Gold Medal, Adele Hyde Morrison Prize - also Popular Prize Award

Medium Watercolor

Painting Size 20 X 14 3/4

Frame Size

Frame Type

Materials

Artist Notes Many people whose judgement I respect, consider "Southern Belle" one of the finest watercolor portraits of my era. Edward G. Robinson loved this watercolor. "How much," he asked. When told by Tone Price's salesman, Robinson responded, "I don't buy anything less than five figures." A Maharajah visiting in Laguna Beach, California, on seeing this watercolor at the Laguna Beach Art Association Exhibition, requested my permission to allow his personal family painter to copy my painting...in order to execute paintings of his family in the same fashion!